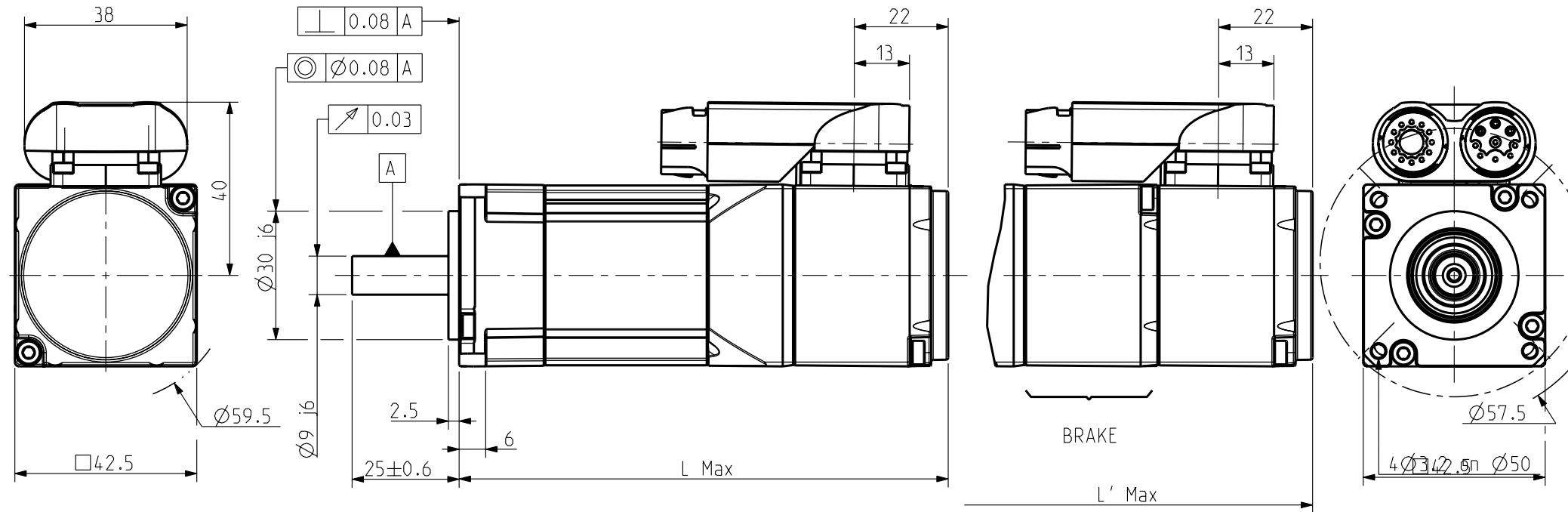


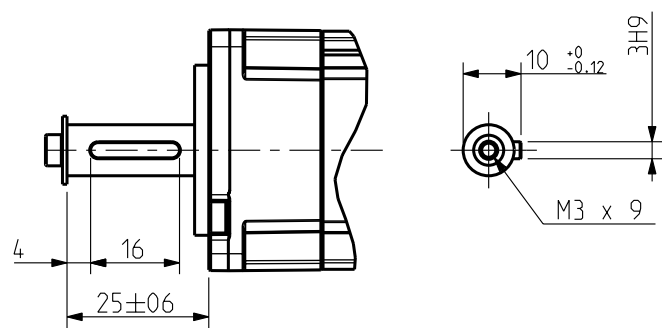
Feedback Letter : A



FEEDBACK OPTIONS

Scale 3/4

KEY



Scale 3/4

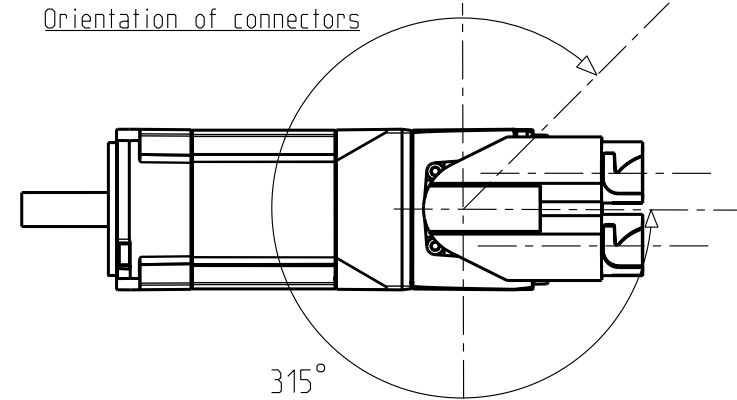
BRAKE Supply voltage : 24V ±10%  
Static torque

20 °C	0.4 Nm
100 °C	*

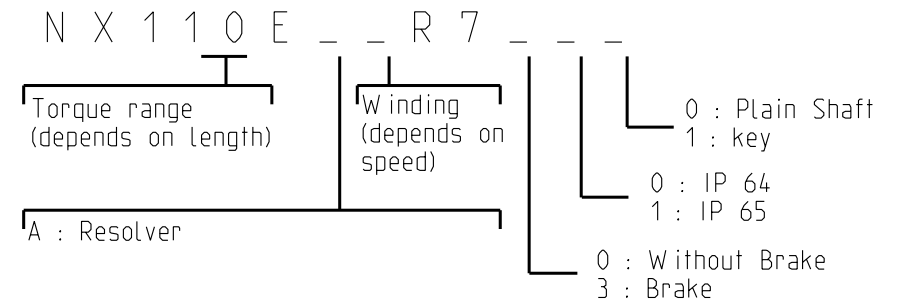
WEIGHT

	NX110
No Brake	0.8 Kg
With Brake	1 Kg

Orientation of connectors



Feedback option (Feedback letter)	Resolver (A)
L (mm)	115
L' (mm)	146

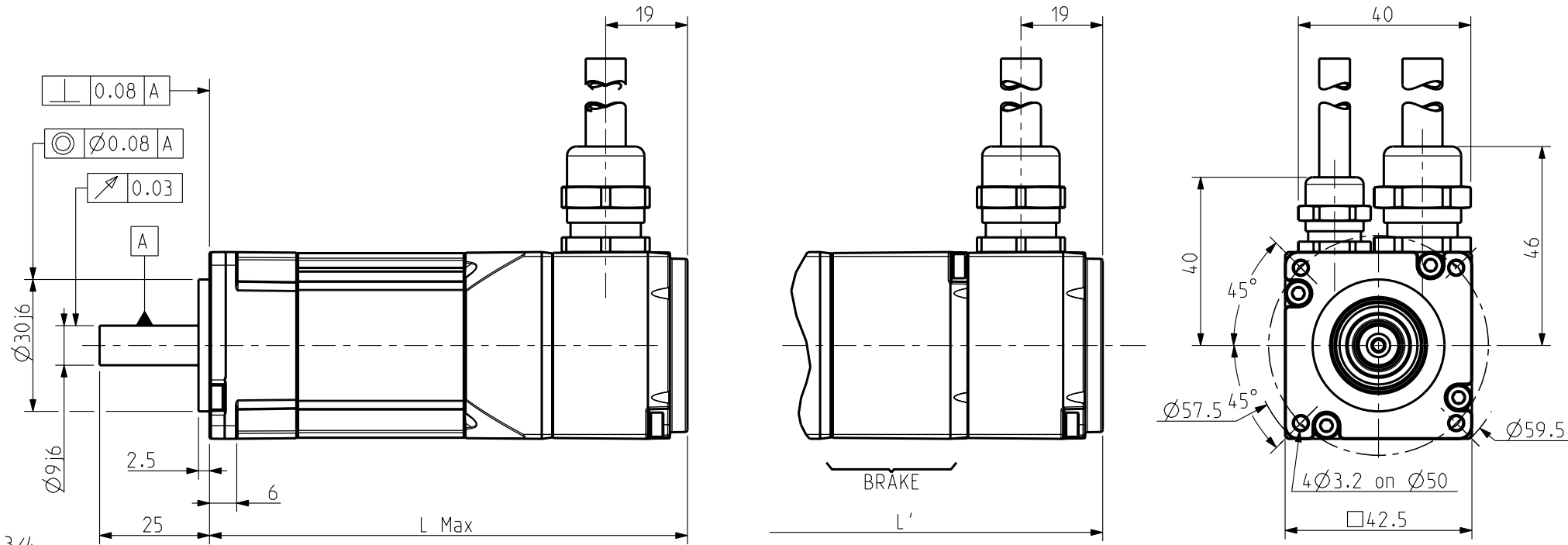


See connectors pin out and encoder settings on drawing 344993

Sheet : 1/3

This document is the property of PARVEX. Transmission as well as reproduction or copy is not permitted without written authorisation.	General tolerances	Drawn	26/11/09	BB	Visa	BB					Scale 3/4	 <b>SSD Parvex</b> 8 Avenue du Lac. BP 249 21007-DIJON cedex-FRANCE www.SSDdrives.com	NX100 CONNECTOR VARIANT	Format	A3	344581	A
	DIN ISO 2768 mk	Modifications	A	AM23337	15/02/10	OD											

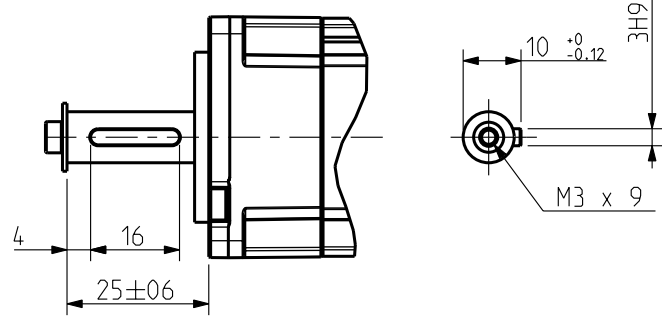
Feedback Letter : A



Scale 3/4

FEEDBACK OPTIONS

KEY



Scale 3/4

**BRAKE** Supply voltage : 24V ±10%  
Static torque

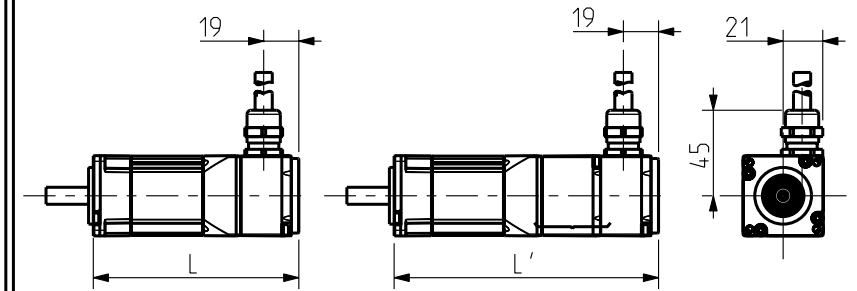
20 °C	0.4 Nm
100 °C	*

WEIGHT

	NX110
No Brake	0.8 Kg
With Brake	1 Kg

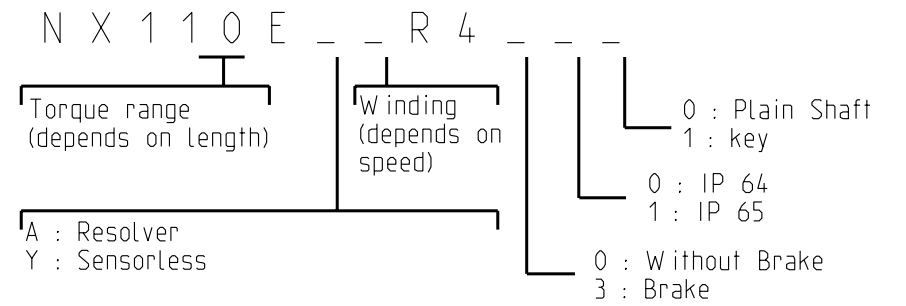
Feedback Letter : Y

Brake version



Scale 1/4

Feedback option (Feedback letter)	Resolver (A)	Sensorless (Y)
L (mm)	110	110
L' (mm)	141	141



WIRES INSIDE PVC SHEATH  
OVERALL SHIELDING

See wire connection and encoder settings on drawing 344993

Sheet : 2/3

This document is the property of PARVEX. Transmission as well as reproduction or copy is not permitted without written authorisation.	General tolerances	Drawn	26/11/09	BB	Visa															
	DIN ISO 2768 mk	Modifications																		
		A	AM23337	15/02/10	OD															

Scale 3/4

**Parker**  
**SSD Parvex**

8 Avenue du Lac. BP 249  
21007-DIJON cedex-FRANCE  
www.SSDdrives.com

NX100

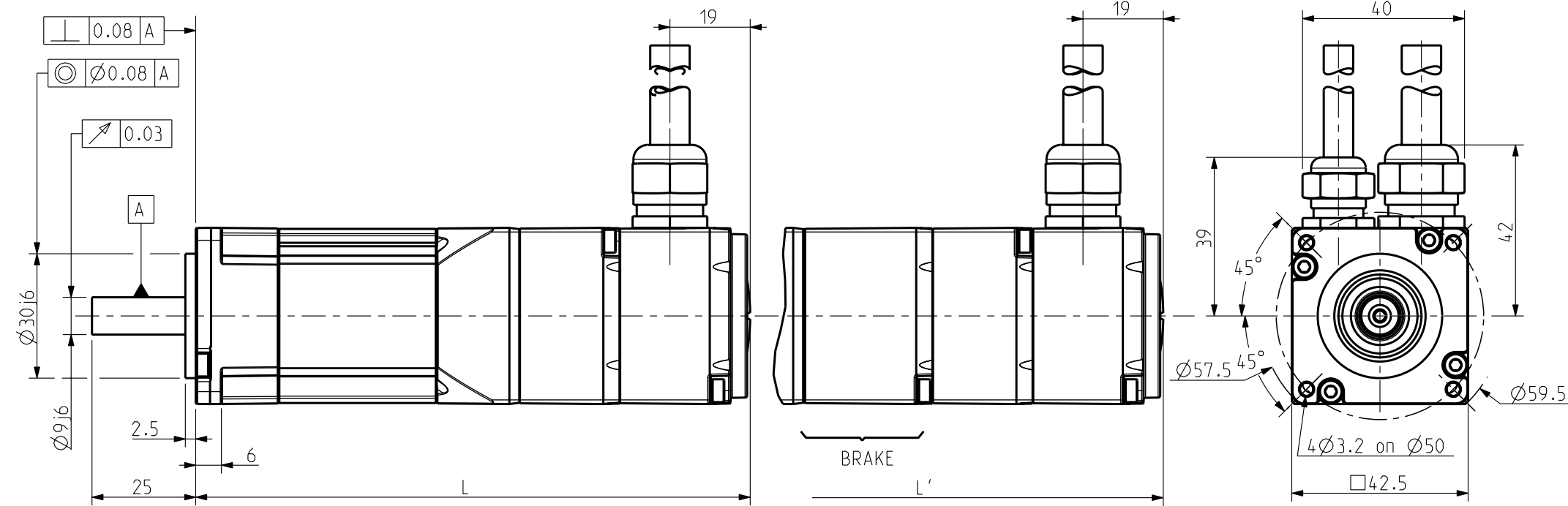
WIRES INSIDE PVC SHEATH

Format A3

344581

A

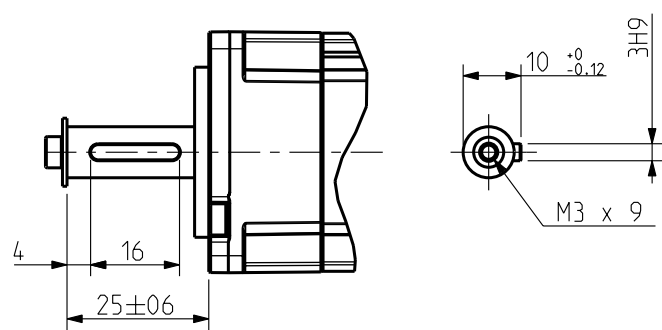
Feedback Letter : A



Scale 3/4

FEEDBACK OPTIONS

KEY



**BRAKE** Supply voltage : 24V ±10%  
Static torque

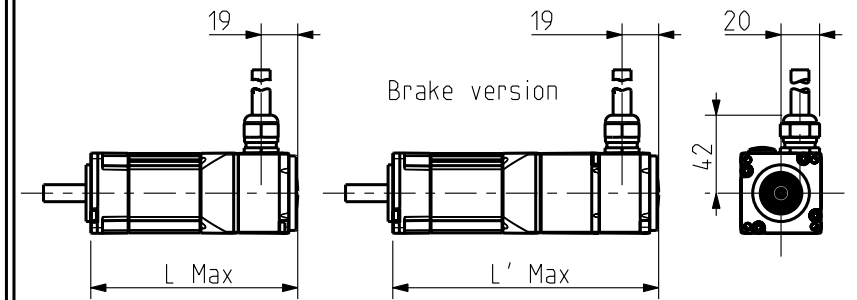
20 °C	0.4 Nm
100 °C	*

**WEIGHT**

	NX110
No Brake	0.8 Kg
With Brake	1 Kg

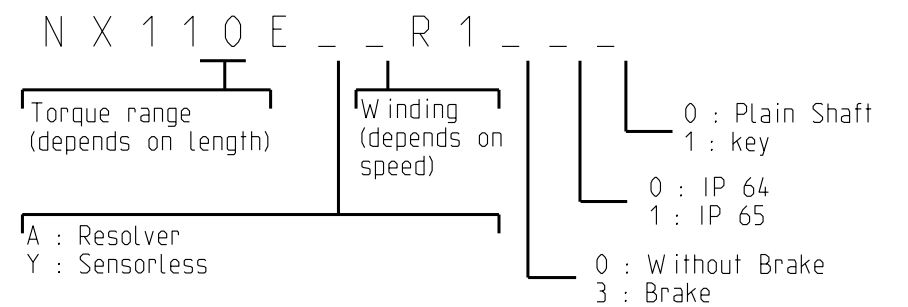
Scale 3/4

FEEDBACK LETTER : Y



Scale 1/4

Feedback option (Feedback letter)	Resolver (A)	Sensorless (Y)
L (mm)	134	110
L' (mm)	165	141

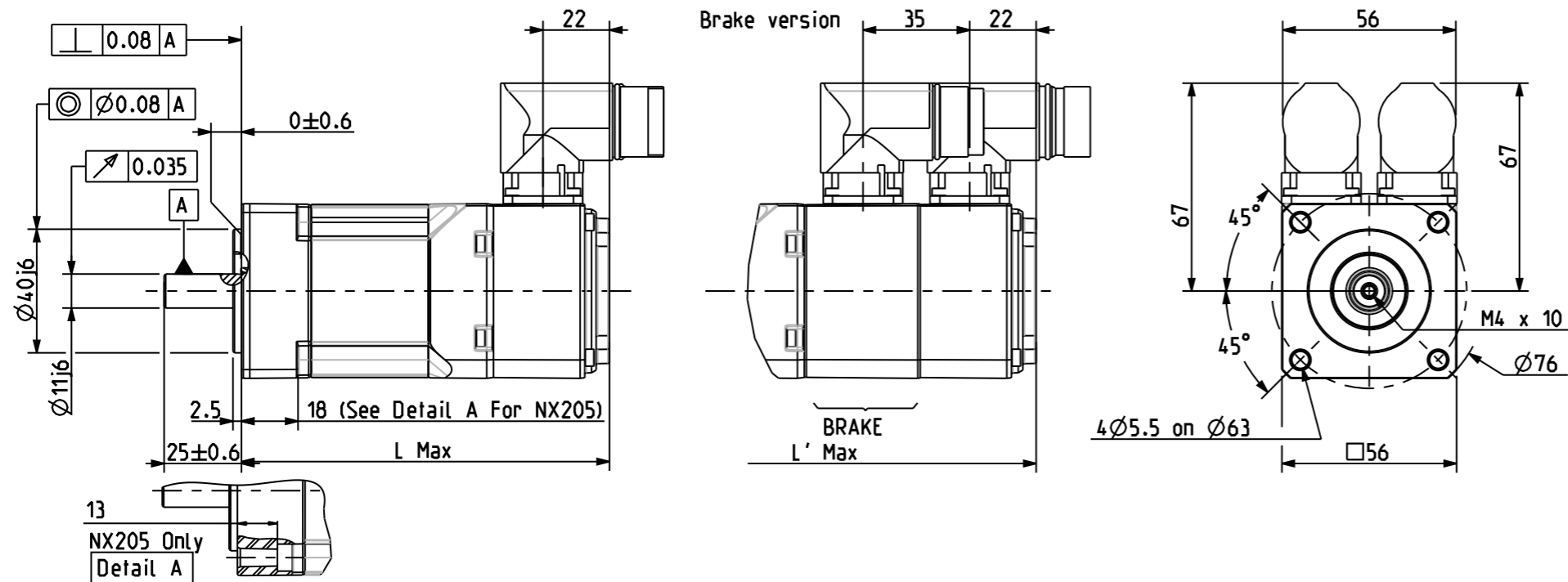


See wire connection and encoder settings on drawing 344993

Sheet : 3/3

This document is the property of PARVEX. Transmission as well as reproduction or copy is not permitted without written authorisation.	General tolerances	Drawn	26/11/09	BB	Visa						Scale 3/4	 <b>SSD Parvex</b> 8 Avenue du lac. BP 249 21007-DIJON cedex-FRANCE www.SSDdrives.com	NX100 CABLE VARIANT	Format	A3	344581	A
	DIN ISO 2768 mk	Modifications	A	AM23337 15/02/10 OD													

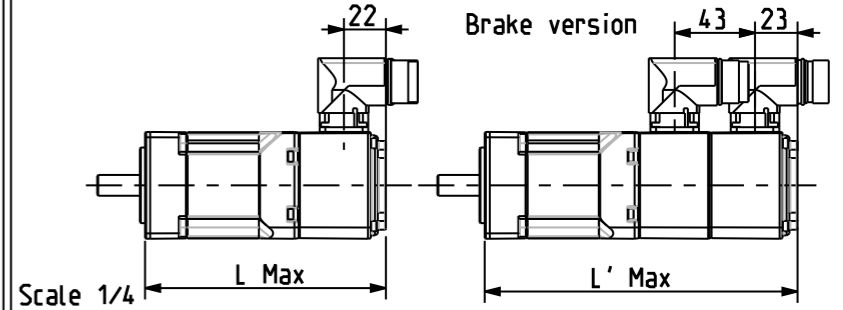
Feedback Letter : A / X



Scale 1/2

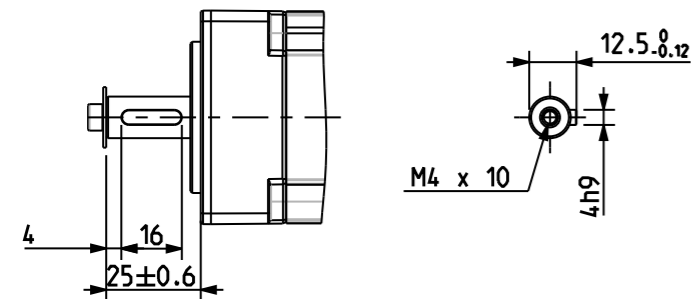
FEEDBACK OPTIONS

Feedback Letter : Q/R/S



Scale 1/4

KEY



Scale 1/2

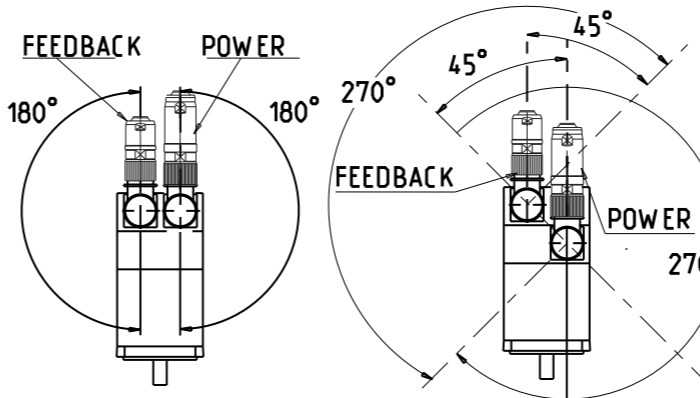
**BRAKE** Supply voltage : 24V ±10%  
Static torque

20 °C	1 Nm
100 °C	•

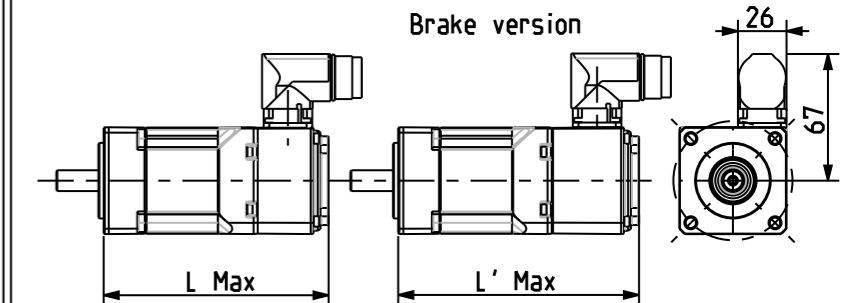
WEIGHT

	NX205	NX210
No Brake	0.8 Kg	1.3 Kg
With Brake	1.1 Kg	1.6 Kg

ORIENTATION OF CONNECTORS



Feedback Letter : Y



Scale : 1/4

	Feedback option (feedback letter)	Resolver (A)	Low cost encoder (X)	Hiperface SEL37 (Q)	Hiperface SKS36 (R)	Hiperface SKM36 (S)	Sensorless (Y)
NX205	L (mm)	100			108		100
	L' (mm)	137			146		108
NX210	L (mm)	120			128		120
	L' (mm)	157			166		128

N X 2 \_ \_ E \_ \_ R 7 \_ \_ \_

Torque range (depends on length)

Winding (depends on speed)

0 : Plain Shaft  
1 : key

0 : IP 64  
1 : IP 65

A : Resolver  
Q : Hiperface Multiturn SEL37  
R : Hiperface Singleturn SKS36  
S : Hiperface Multiturn SKM36  
X : Low Cost Encoder  
Y : Sensorless

0 : Without Brake  
3 : Brake  
• : Thermal protection options on drawing 344993

See connectors pin out and encoder settings on drawing 344993

Sheet : 1/4

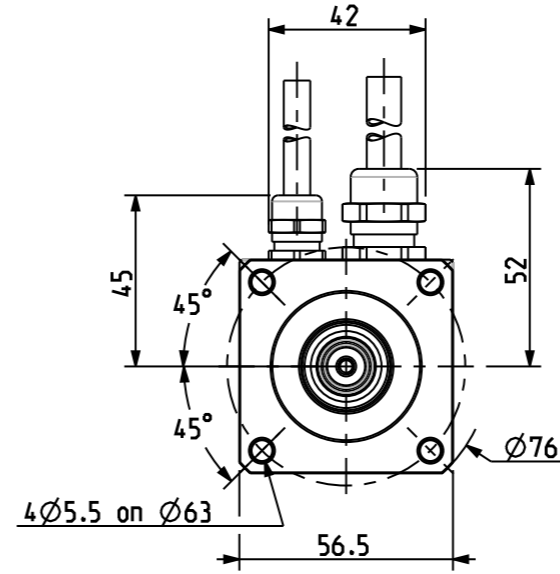
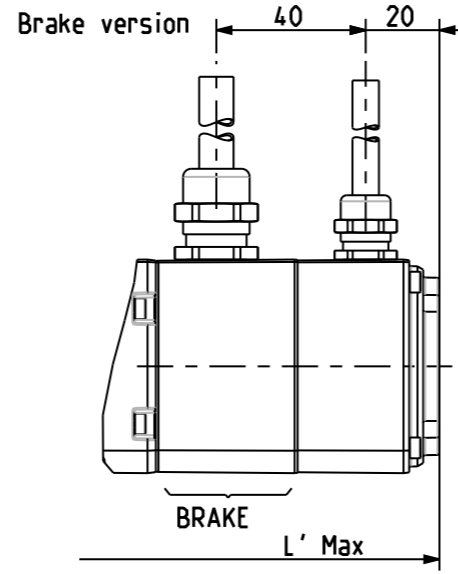
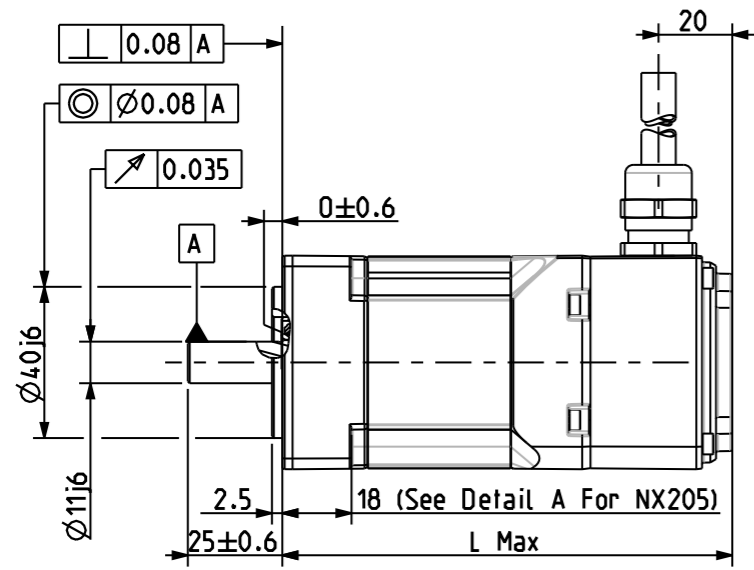
This document is the property of PARVEX. Transmission as well as reproduction or copy is not permitted without written authorisation.	General tolerances	Drawn	26/11/09	BB	Visa														
	DIN ISO 2768 mk	Modifications	B	AM23403 10/05/10 OD															
			A	AM23337 15/02/10 OD															

**Parker**  
**SSD Parvex**  
8 Avenue du lac. BP 249  
21007-DIJON cedex-FRANCE  
www.SSDdrives.com

NX200  
CONNECTOR VARIANT

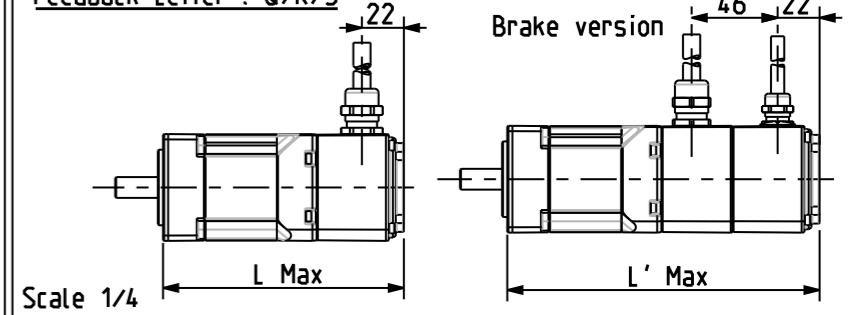
Format A3  
344594 B

Feedback Letter : A / X

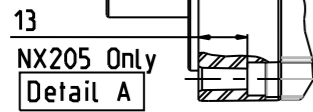


FEEDBACK OPTIONS

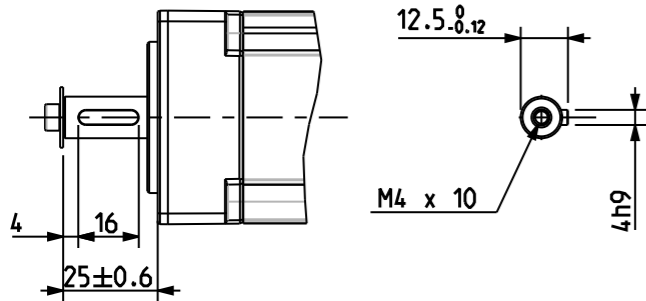
Feedback Letter : Q/R/S



Scale 1/2



KEY



**BRAKE** Supply voltage : 24V ±10%  
Static torque

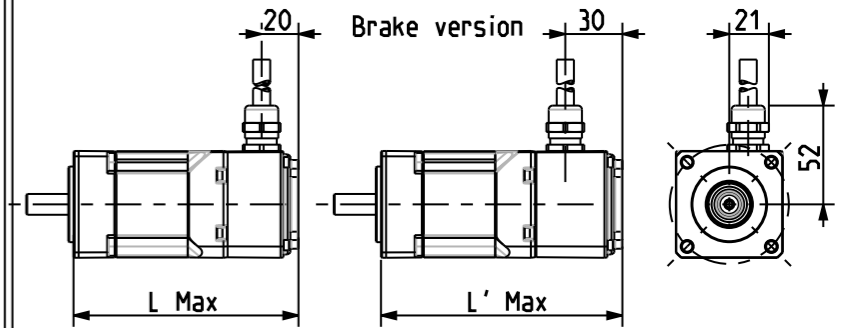
20 °C	1 Nm
100 °C	•

**WEIGHT**

	NX205	NX210
No Brake	0.8 Kg	1.3 Kg
With Brake	1.1 Kg	1.6 Kg

Scale 1/2

Feedback Letter : Y



Scale 1/4

	Feedback option (feedback letter)	Resolver (A)	Low cost encoder (X)	Hiperface SEL37 (Q)	Hiperface SKS36 (R)	Hiperface SKM36 (S)	Sensorless (Y)
NX205	L (mm)	100		108			100
	L' (mm)	137		146			119
NX210	L (mm)	120		128			120
	L' (mm)	157		166			129

N X 2 \_ \_ E \_ \_ R 4

Torque range (depends on length)

Winding (depends on speed)

0 : Plain Shaft  
1 : key

0 : IP 64  
1 : IP 65

A : Resolver  
Q : Hiperface Multiturn SEL37  
R : Hiperface Singleturn SKS36  
S : Hiperface Multiturn SKM36  
X : Low Cost Encoder  
Y : Sensorless

0 : Without Brake  
3 : Brake  
• : Thermal protection options on drawing 344993

WIRES INSIDE PVC SHEATH  
OVERALL SHIELDING

See wire connection out and encoder settings on drawing 344993

Sheet : 2/4

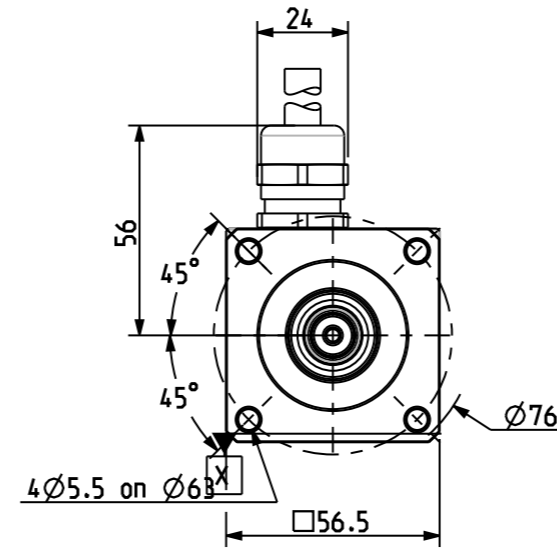
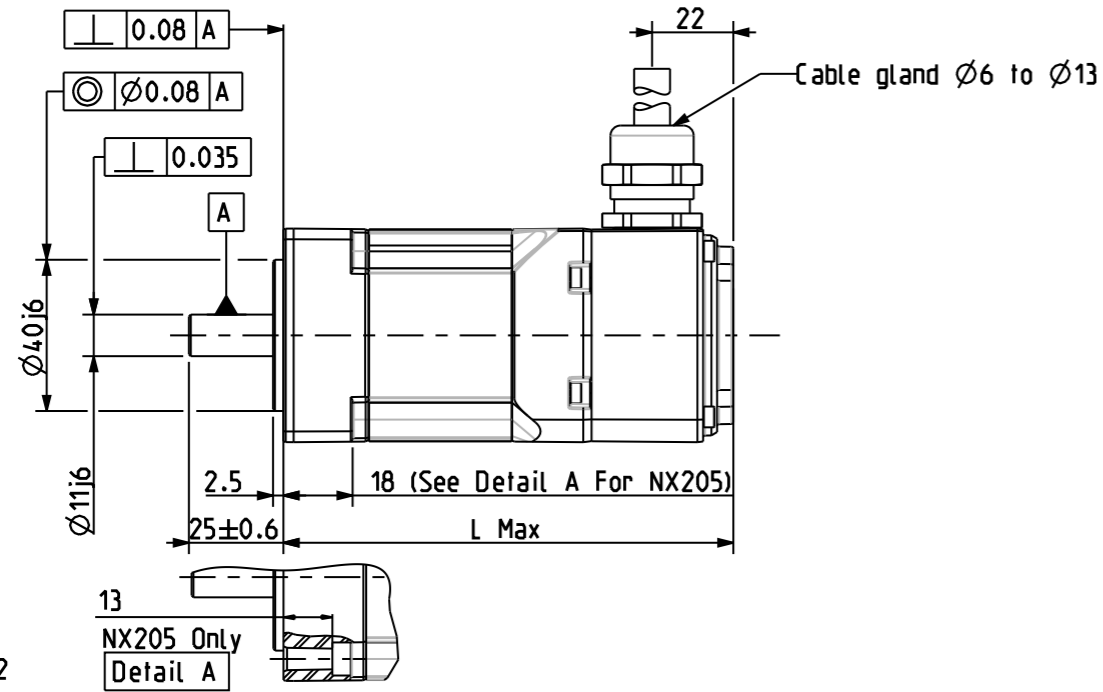
This document is the property of PARVEX. Transmission as well as reproduction or copy is not permitted without written authorisation.	General tolerances	Drawn	26/11/09	BB	Visa																
	DIN ISO 2768 mk	Modifications	B	AM23403 10/05/10 OD																	
			A	AM23337 15/02/10 OD																	

**Parker**  
**SSD Parvex**  
8 Avenue du lac. BP 249  
21007-DIJON cedex-FRANCE  
www.SSDdrives.com

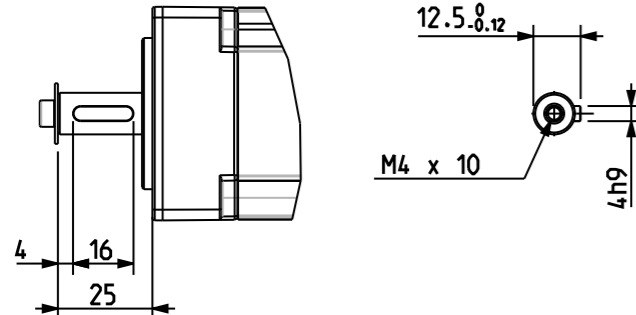
NX200  
WIRES INSIDE PVC SHEATH

Format A3  
344594  
B

Feedback Letter : Y



Scale 1/2

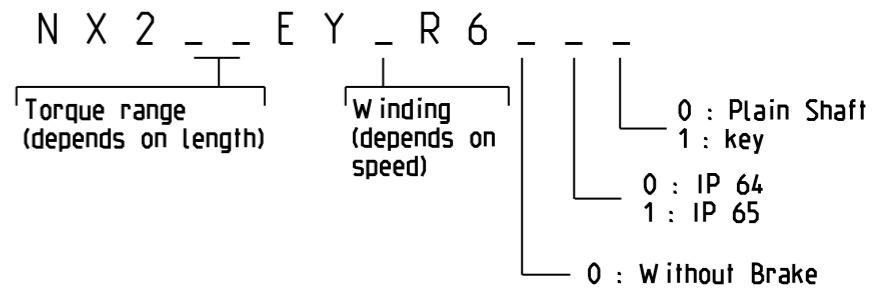


**WEIGHT**

	NX205	NX210
No Brake	0.8 Kg	1.3 Kg

Scale 1/2

	Feedback option (feedback letter)	Sensorless (Y)
NX205	L (mm)	100
NX210	L (mm)	120

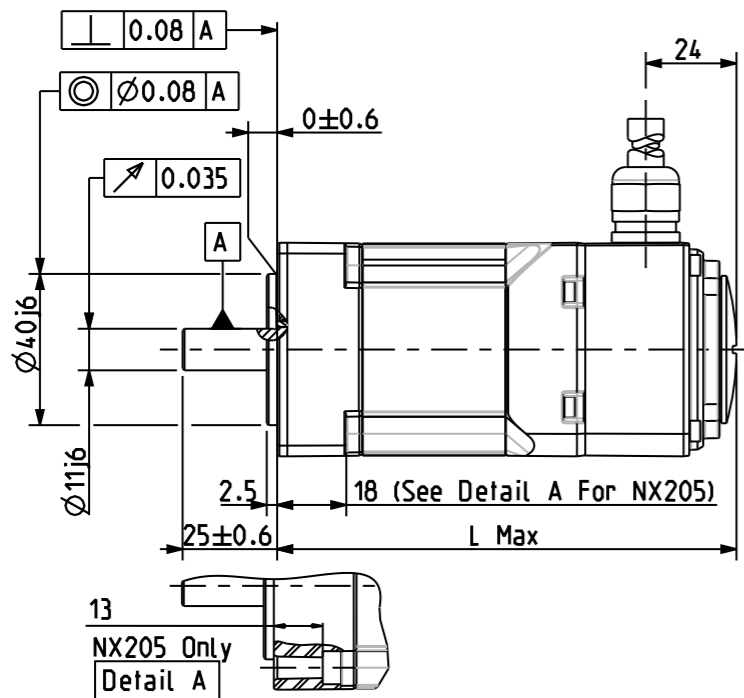


See connectors pin out and encoder settings on drawing 344993

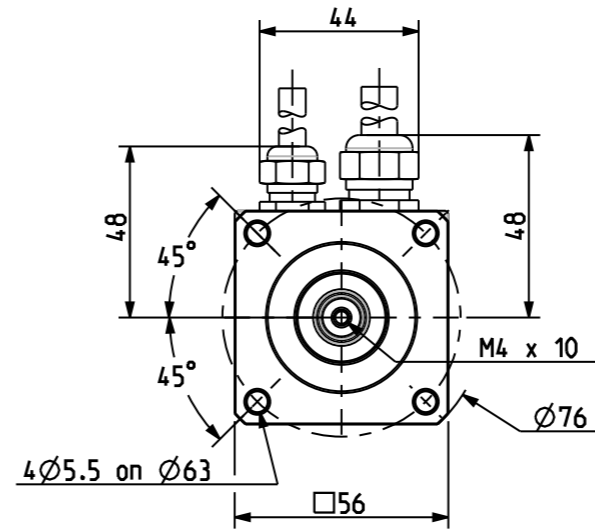
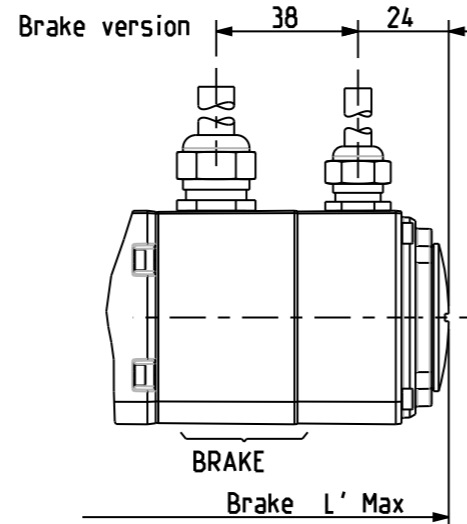
Sheet : 3/4

This document is the property of PARVEX. Transmission as well as reproduction or copy is not permitted without written authorisation.	General tolerances	Drawn	26/11/09	BB	Visa					 <b>SSD Parvex</b> 8 Avenue du lac. BP 249 21007-DIJON cedex-FRANCE www.SSDdrives.com	NX200	Format	
	DIN ISO 2768 mk	Modifications	B	AM23403 10/05/10 OD					Scale		A3		
		A	AM23337 15/02/10 OD					1/2					
											SENSORLESS VARIANT	344594	B

Feedback Letter : A / X

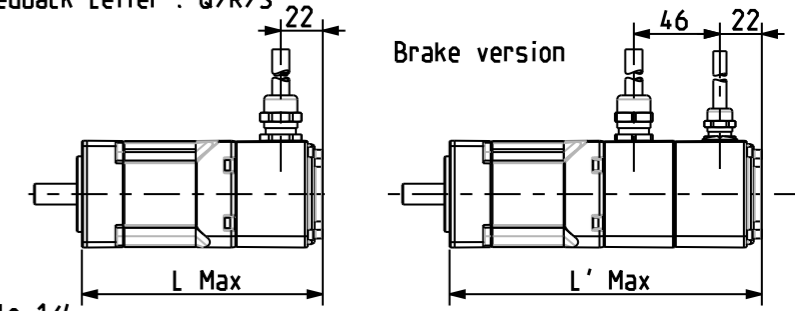


Scale 1/2



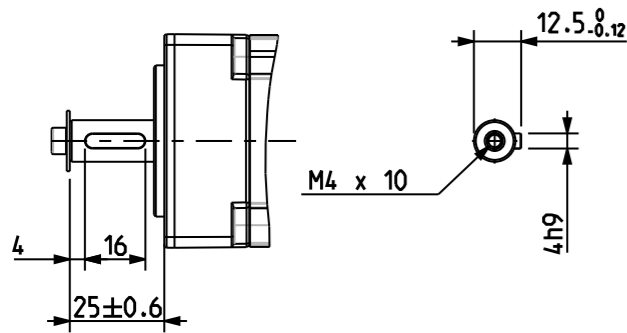
FEEDBACK OPTIONS

Feedback Letter : Q/R/S



Scale 1/4

KEY



Scale 1/2

**BRAKE** Supply voltage : 24V ±10%  
Static torque

20 °C	1 Nm
100 °C	•

**WEIGHT**

	NX205	NX210
No Brake	0.8 Kg	1.3 Kg
With Brake	1.1 Kg	1.6 Kg

	Feedback option (feedback letter)	Resolver (A)	Low cost encoder (X)	Hiperface SEL37 (Q)	Hiperface SKS36 (R)	Hiperface SKM36 (S)
NX205	L (mm)		102		106	
	L' (mm)		140		146	
NX210	L (mm)		122		126	
	L' (mm)		160		166	

N X 2 \_ \_ E \_ \_ R 1 \_ \_ \_

Torque range (depends on length)

Winding (depends on speed)

0 : Plain Shaft  
1 : key

0 : IP 64  
1 : IP 65

A : Resolver  
Q : Hiperface Multiturn SEL37  
R : Hiperface Singleturn SKS36  
S : Hiperface Multiturn SKM36  
X : Low Cost Encoder  
Y : Sensorless

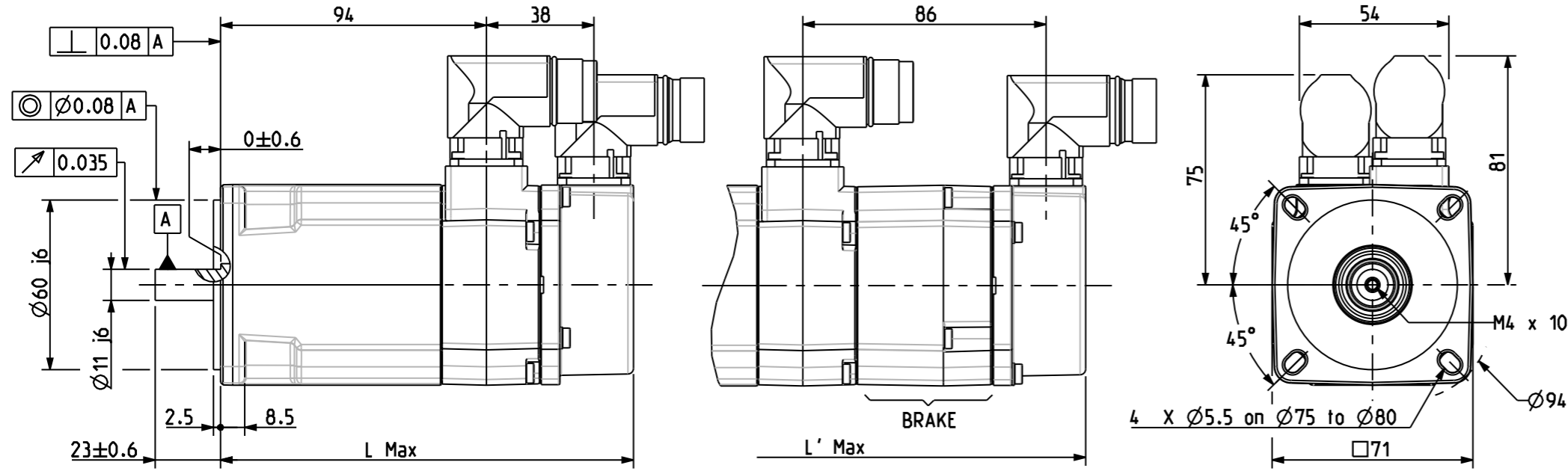
0 : Without Brake  
3 : Brake  
• : Thermal protection options on drawing 344993

See wire connection out and encoder settings on drawing 344993

Sheet : 4/4

This document is the property of PARVEX. Transmission as well as reproduction or copy is not permitted without written authorisation.	General tolerances	Drawn	26/11/09	BB	Visa						 <b>SSD Parvex</b> 8 Avenue du lac. BP 249 21007-DIJON cedex-FRANCE www.SSDdrives.com	NX200	Format	A3	344594	B
	DIN ISO 2768 mk	Modifications	B	AM23403	10/05/10	OD				Scale			1/2			
		A	AM23337	15/02/10	OD											

Feedback letter : A/X

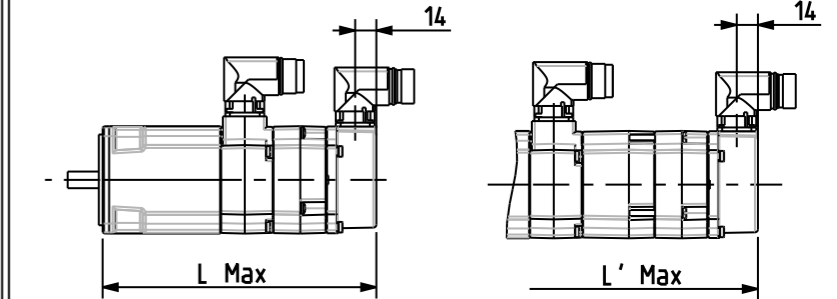


Scale 1:2

Brake Version

FEEDBACK OPTIONS

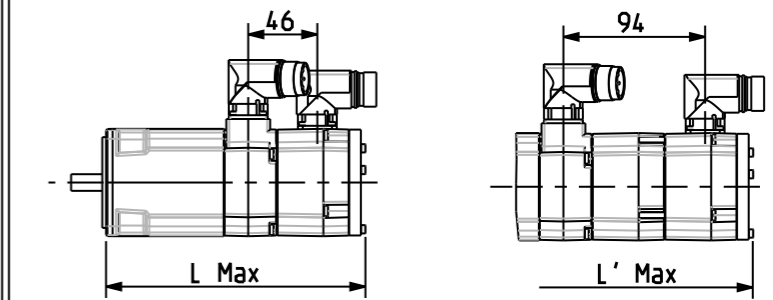
Feedback letter : Q/R/S/V/W



Scale 1:5

Brake Version

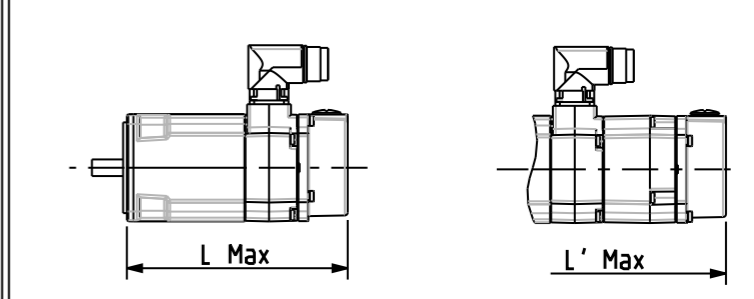
Feedback letter : T/U



Scale 1:5

Brake Version

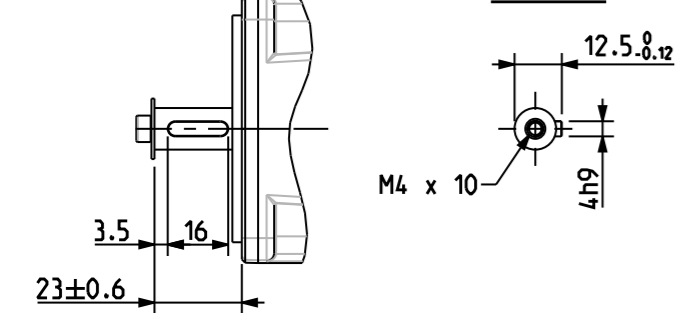
Feedback letter : Y



Scale 1:5

Brake Version

Key



Scale 1:2

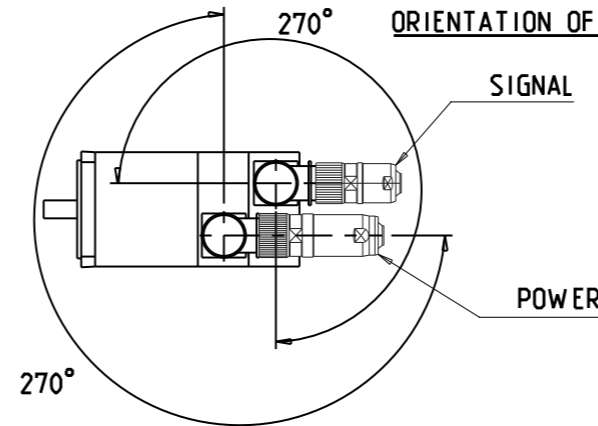
BRAKE Supply voltage : 24V  $\pm 10\%$   
Static torque

20 °C	2 Nm
100 °C	1.8 Nm

Weight

	NX310
No Brake	2 Kg
With Brake	2.4 Kg

ORIENTATION OF CONNECTORS



Feedback options (feedback letter)	Resolver (A)	Low cost encoder (X)	Hiperface SEL37 (Q)	Hiperface SKS36 (R)	Hiperface SKM36 (S)	Endat ECN1113 (V)	Endat EQN1125 (W)	Hiperface SRS50 (T)	Hiperface SRM50 (U)	Sensorless (Y)
L (mm)	147			182		176		173		147
L' (mm)	195			230		224		221		195

N X 3 1 0 E - - R 7 - - -

Torque range (depends on length)

Winding (depends on speed)

0 : Plain Shaft  
1 : key  
0 : IP 64  
1 : IP 65

A : Resolver  
Q : Hiperface Multiturn SEL37  
R : Hiperface Singleturn SKS36  
S : Hiperface Multiturn SKM36  
T : Hiperface Singleturn SRS50  
U : Hiperface Multiturn SRM50  
V : Endat Singleturn ECN1113  
W : Endat Multiturn EQN1125  
X : Low Cost Encoder  
Y : Sensorless

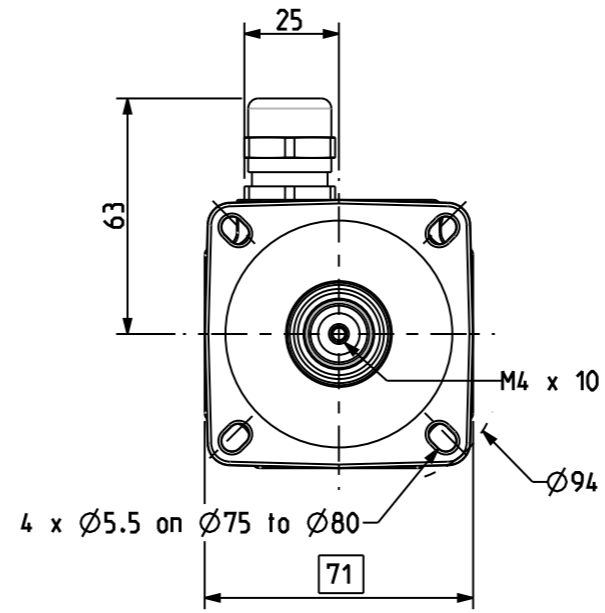
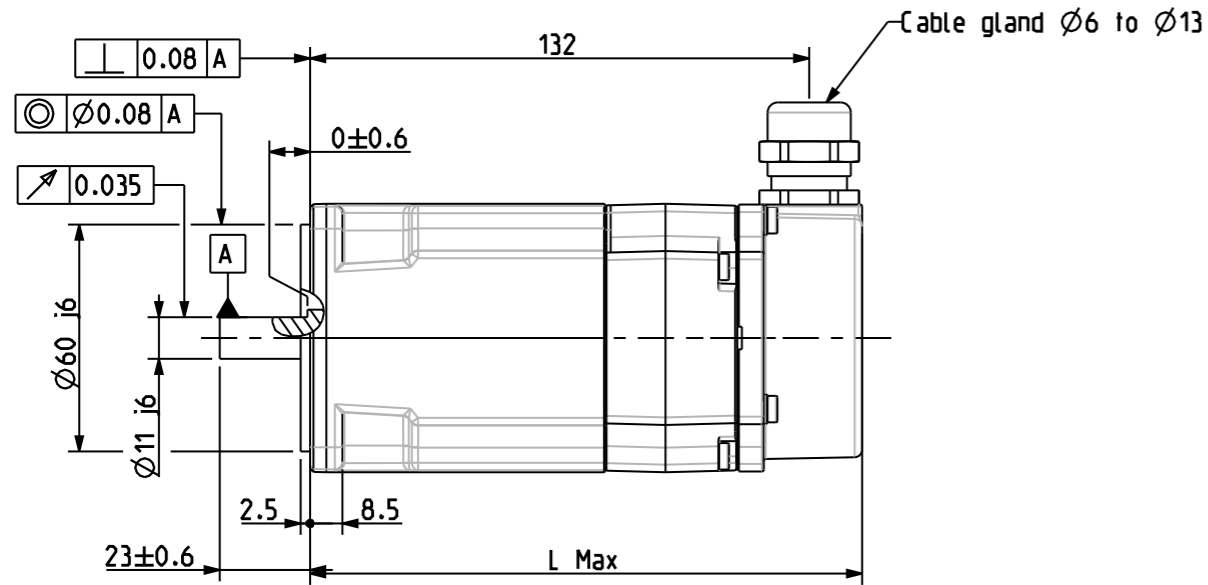
See connectors pin out and encoder settings on drawing 344993

Sheet : 3/3

This document is the property of PARVEX. Transmission as well as reproduction or copy is not permitted without written authorisation.	General tolerances	Drawn	03/07/09	YG	Visa						Scale 1:2	SSD Parvex 8 Avenue du lac. BP249 21007-DIJON cedex-FRANCE www.SSDdrives.com	NX300 CONNECTOR VARIANT	Format	F	E	S	G	I	344167	B
	DIN ISO 2768 mK	Modifications	B	AM23403	10/05/10	OD									A3	X					



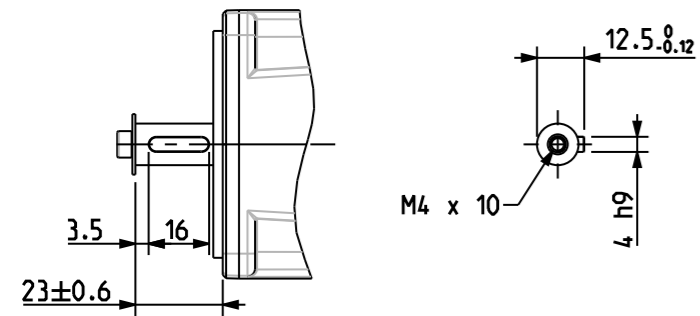
Feedback letter : Y



Scale 1:2

Key

Shaft End



Weight

	NX310
No Brake	2 Kg

Scale 1:2

Feedback option (feedback letter)	Sensorless (Y)
L (mm)	147

N X 3 1 0 E Y \_ R 6

Torque range (depends on length)

Winding (depends on speed)

0 : Plain Shaft  
1 : key

0 : IP 64  
1 : IP 65

0 : Without Brake  
• : Thermal protection options on drawing 344993

See connectors pin out and encoder settings on drawing 344993

Sheet : 2/3

This document is the property of PARVEX. Transmission as well as reproduction or copy is not permitted without written authorisation.

General tolerances  
DIN ISO 2768 mK

Drawn	03/07/09	YG	Visa					
Modifications	B	AM23403	10/05/10	OD				
	A	AM23337	15/02/10	OD				

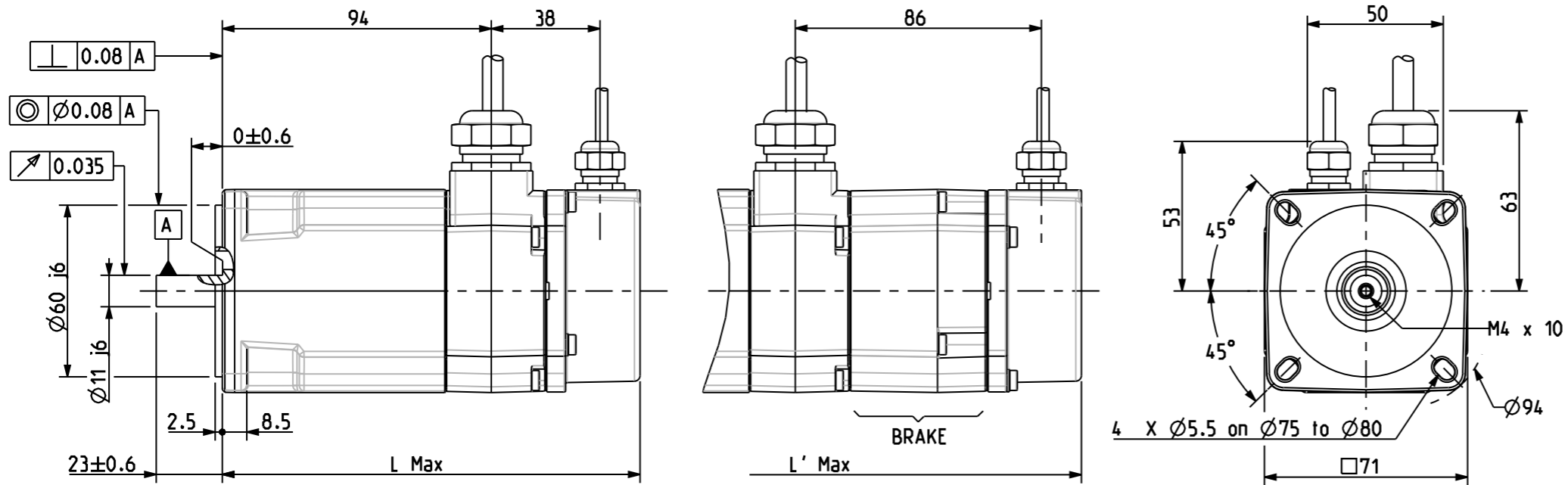
Scale  
1:2

**Parker**  
**SSD Parvex**  
8 Avenue du Lac. BP249  
21007-DIJON cedex-FRANCE  
www.SSDdrives.com

NX300  
SENSORLESS VARIANT

Format	F	E	S	G	I
A3	x				
344167					
B					

Feedback letter : A/X

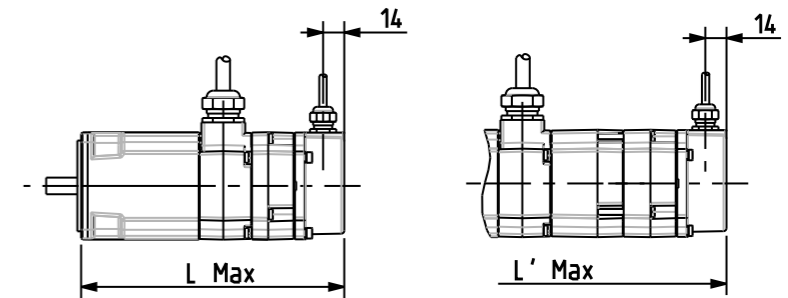


Scale 1:2

Brake Version

FEEDBACK OPTIONS

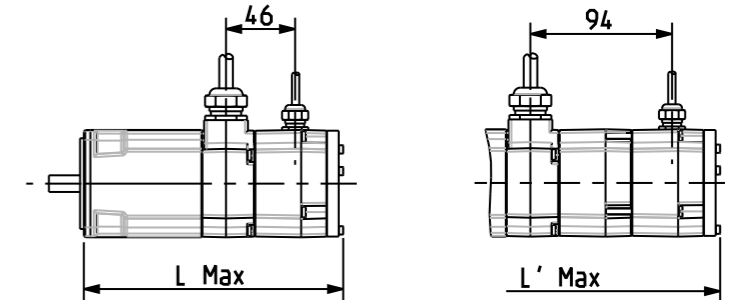
Feedback letter : Q/R/S/V/W



Scale 1:5

Brake Version

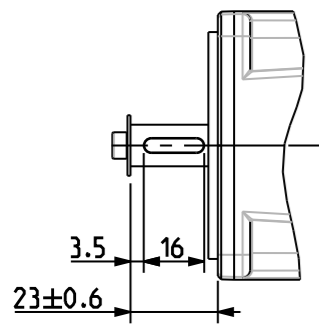
Feedback letter : T/U



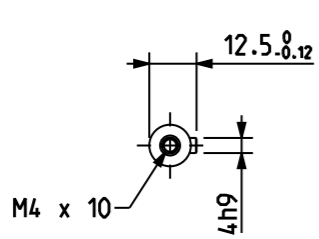
Scale 1:5

Brake Version

Key



Shaft End



**BRAKE** Supply voltage : 24V ±10%  
Static torque

20°C	2 Nm
100°C	1.8 Nm

Weight

	NX310
No Brake	2 Kg
With Brake	2.4 Kg

Scale 1:2

Feedback options (feedback letter)	Resolver (A)	Low cost encoder (X)	Hiperface SEL37 (Q)	Hiperface SKS36 (R)	Hiperface SKM36 (S)	Endat ECN1113 (V)	Endat EQN1125 (W)	Hiperface SRS50 (T)	Hiperface SRM50 (U)
L (mm)	147			182		176		173	
L' (mm)	195			230		224		221	

N X 3 1 0 E - - R 1 - - -

Torque range (depends on length)

Winding (depends on speed)

0 : Plain Shaft  
1 : key

0 : IP 64  
1 : IP 65

A : Resolver  
Q : Hiperface Multiturn SEL37  
R : Hiperface Singleturn SKS36  
S : Hiperface Multiturn SKM36  
T : Hiperface Singleturn SRS50  
U : Hiperface Multiturn SRM50  
V : Endat Singleturn ECN1113  
W : Endat Multiturn EQN1125  
X : Low Cost Encoder

0 : Without Brake  
3 : Brake  
• : Thermal protection options on drawing 344993

See connectors pin out and encoder settings on drawing 344993

Sheet : 1/3

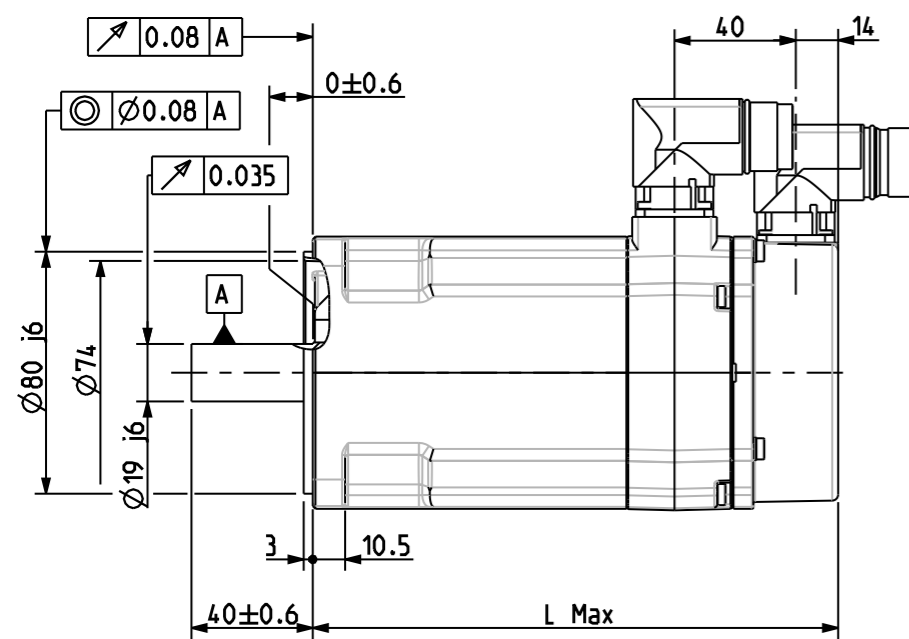
<p>This document is the property of PARVEX. Transmission as well as reproduction or copy is not permitted without written authorisation.</p>	General tolerances	Drawn	03/07/09	YG	Visa														
	DIN ISO 2768 mK	Modifications	B	AM23403 10/05/10 OD															
			A	AM23337 15/02/10 OD															

**Parker**  
**SSD Parvex**  
8 Avenue du Lac. BP249  
21007-DIJON cedex-FRANCE  
www.SSDdrives.com

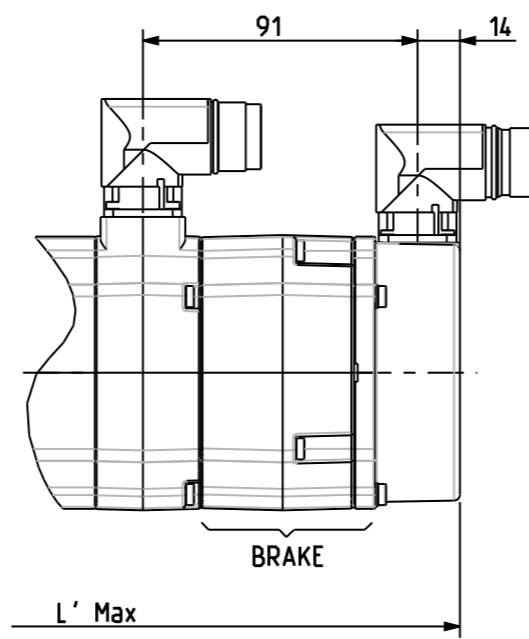
NX300  
CABLE VARIANT

Format	F	E	S	G	I
A3		x			
344167					
B					

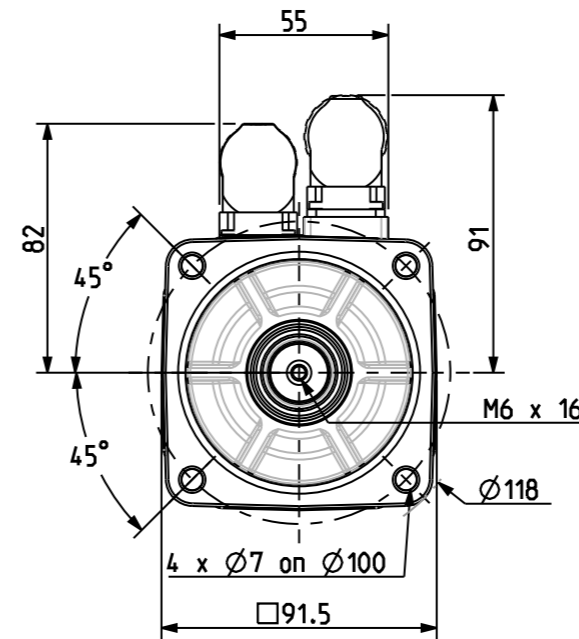
Feedback letter : A/X



Scale 2:5

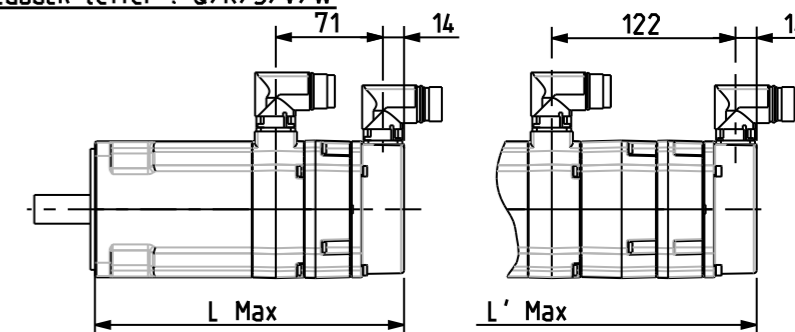


Scale 2:5  
Brake Version



FEEDBACK OPTIONS

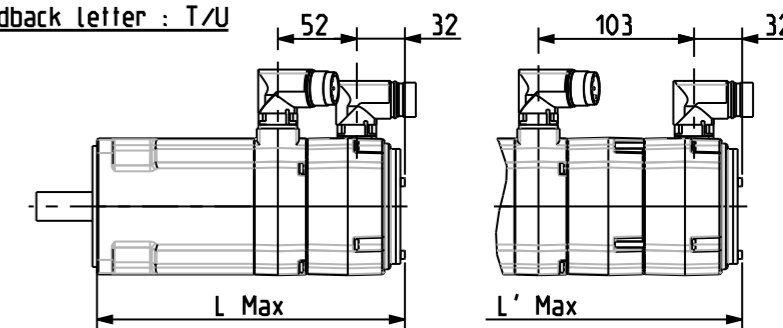
Feedback letter : Q/R/S/V/W



Scale 1:5

Scale 1:5  
Brake Version

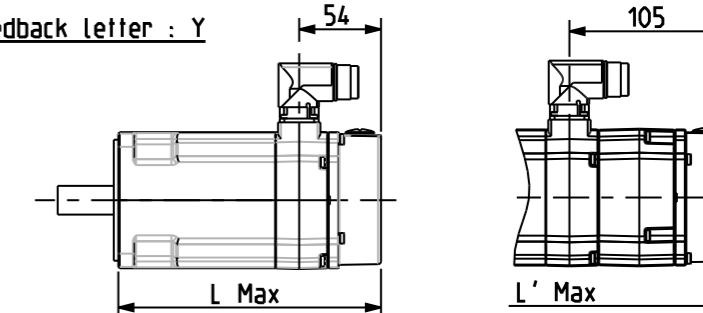
Feedback letter : T/U



Scale 1:5

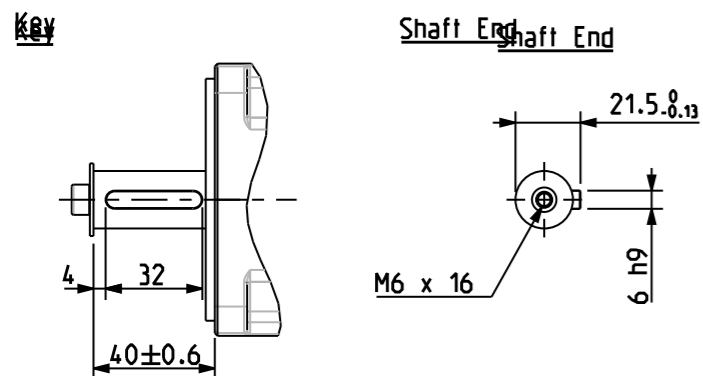
Scale 1:5  
Brake Version

Feedback letter : Y



Scale 1:5

Scale 1:5  
Brake Version



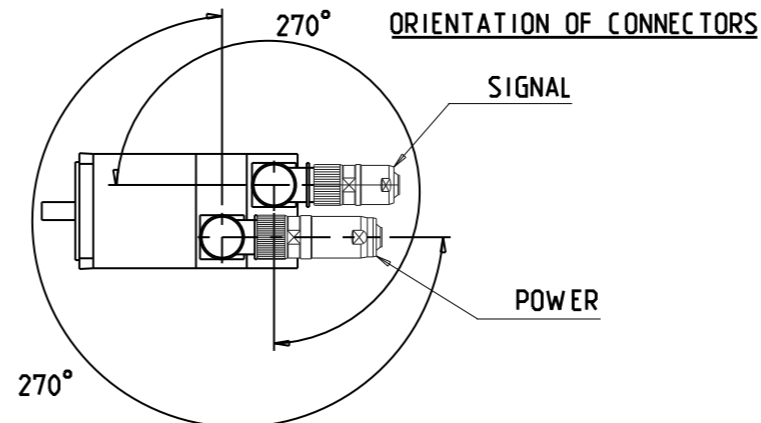
Scale 2:5

**BRAKE** Supply voltage : 24V ±10%  
Static torque

	NX420	NX430
20 °C	6 Nm	6 Nm
100 °C	5 Nm	5 Nm

Weight

	NX420	NX430
No Brake	3.7 Kg	4.6 Kg
With Brake	4.5 Kg	5.4 Kg



	Feedback options (feedback letter)	Resolver (A)	Low cost encoder (X)	Hiperface SEL37 (Q)	Hiperface SKS36 (R)	Hiperface SKM36 (S)	Endat ECN1113 (V)	Endat EQN1125 (W)	Hiperface SRS50 (T)	Hiperface SRM50 (U)	Sensorless (Y)
NX420	L (mm)	175				206			205		175
	L' (mm)	226				261			256		226
NX430	L (mm)	200				231			230		200
	L' (mm)	251				286			281		251

N X 4 \_ \_ E \_ \_ R 7

Torque range (depends on length)

Winding (depends on speed)

0 : Plain Shaft  
1 : key

0 : IP 64  
1 : IP 65

A : Resolver  
Q : Hiperface Multiturn SEL37  
R : Hiperface Singleturn SKS36  
S : Hiperface Multiturn SKM36  
T : Hiperface Singleturn SRS50  
U : Hiperface Multiturn SRM50  
V : Endat Singleturn ECN1113  
W : Endat Multiturn EQN1125  
X : Low Cost Encoder  
Y : Sensorless

0 : Without Brake  
3 : Brake  
▪ : Thermal protection options on drawing 344993

See connectors pin out and encoder settings on drawing 344993

Sheet : 1/4

This document is the property of PARVEX. Transmission as well as reproduction or copy is not permitted without written authorisation.

General tolerances  
DIN ISO 2768 mK

Drawn	03/07/09	OD	Visa						
Modifications	B	AM23403 10/05/10 OD							
	A	AM23337 15/02/10 OD							

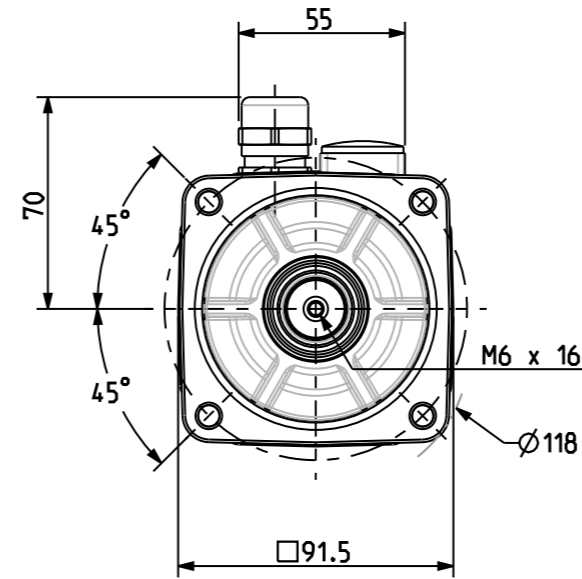
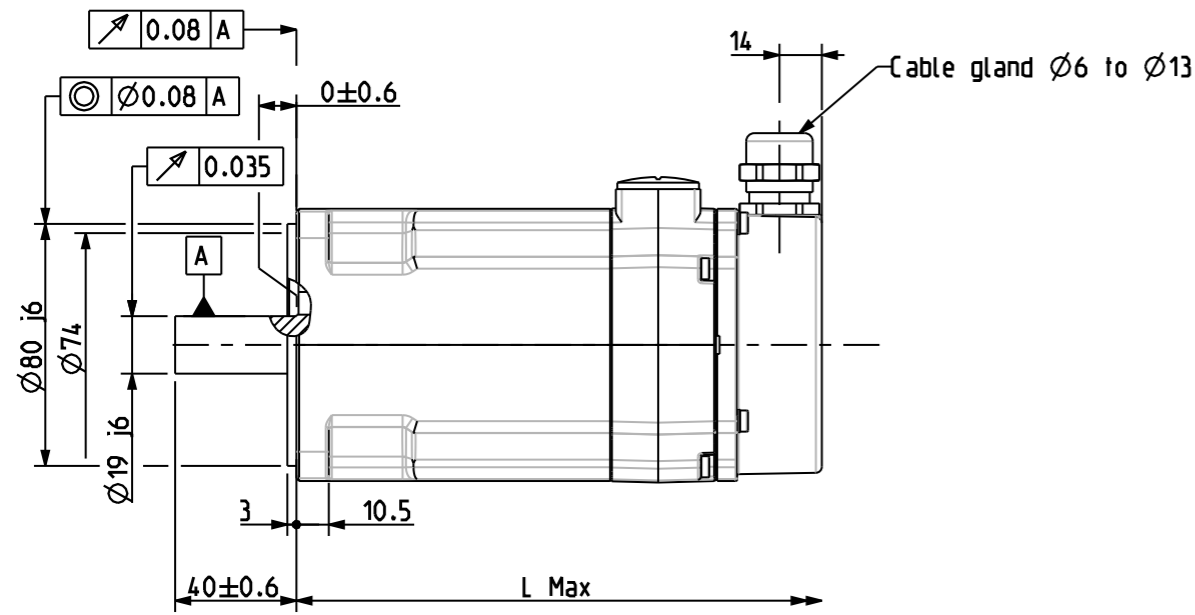
Scale  
2:5

**Parker**  
**SSD Parvex**  
8 Avenue du lac. BP249  
21007-DIJON cedex-FRANCE  
www.SSDdrives.com

NX400  
CONNECTOR VARIANT

Format	F	E	S	G	I
A3	x				
344178					
B					

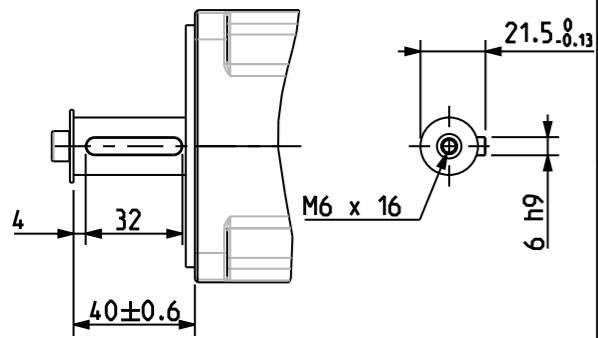
Feedback letter : Y



Scale 2:5

Key

Shaft End



Weight

	NX420	NX430
No Brake	3.7 Kg	4.6 Kg

Scale 2:5

	Feedback options (feedback letter)	Sensorless (Y)
NX420	L (mm)	175
NX430	L (mm)	200

N X 4 \_ \_ E Y \_ R 6 \_ \_ \_

Torque range (depends on length)

Winding (depends on speed)

0 : Plain Shaft  
1 : key

0 : IP 64  
1 : IP 65

0 : Without Brake  
3 : Brake  
• : Thermal protection options on drawing 344993

See connectors pin out and encoder settings on drawing 344993

Sheet : 2/4

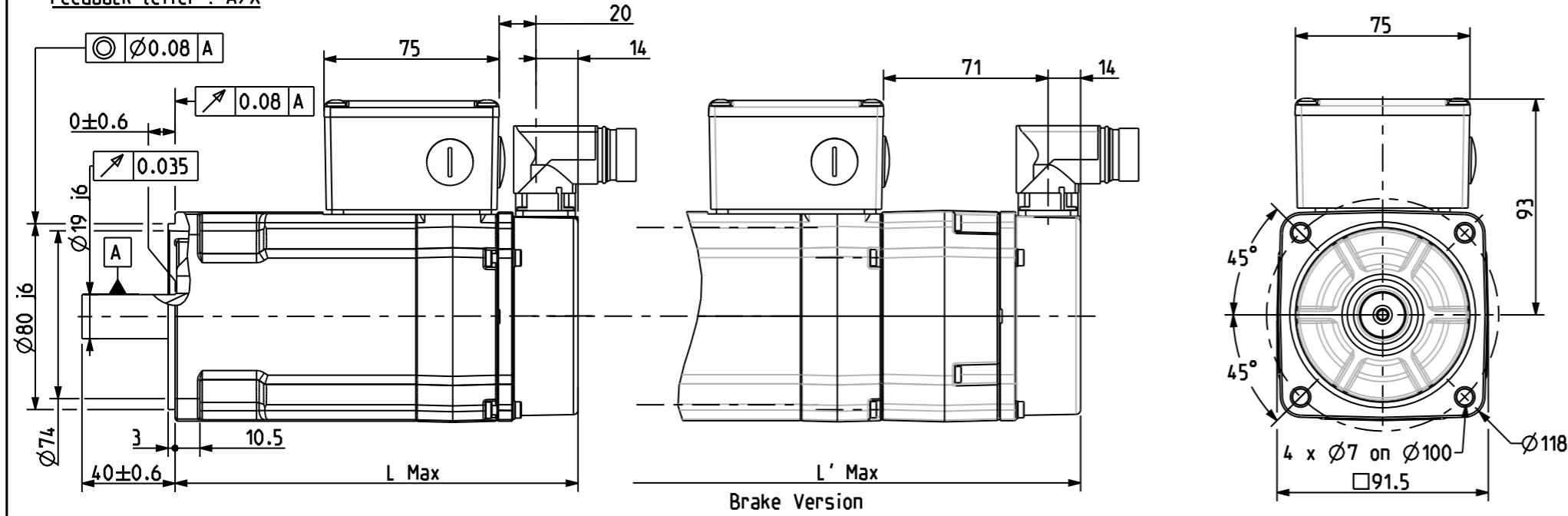
This document is the property of PARVEX. Transmission as well as reproduction or copy is not permitted without written authorisation.	General tolerances	Drawn	03/07/09	OD	Visa													
	DIN ISO 2768 mK	Modifications	B	AM23403	10/05/10	OD												
			A	AM23337	15/02/10	OD												

**Parker**  
**SSD Parvex**  
8 Avenue du Lac. BP249  
21007-DIJON cedex-FRANCE  
www.SSDdrives.com

NX400  
SENSORLESS VARIANT

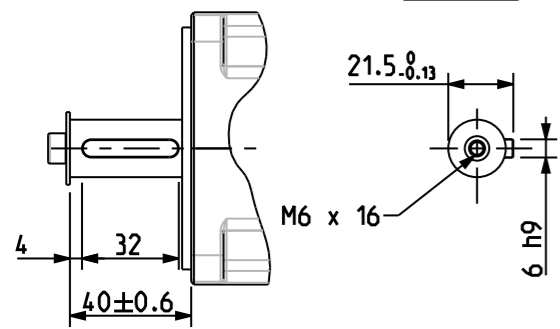
Format	F	E	S	G	I
A3	x				
344178					
B					

Feedback letter : A/X



Scale 2:5

Key



Scale 2:5

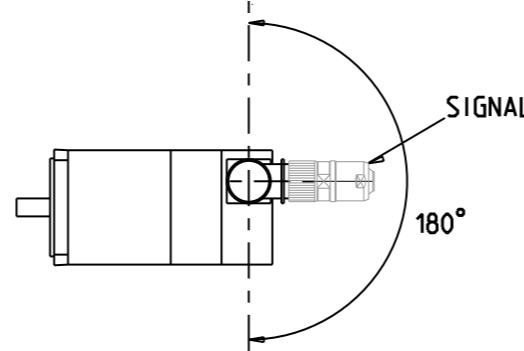
**BRAKE** Supply voltage : 24V ±10%  
Static torque

	NX420	NX430
20 °C	6 Nm	6 Nm
100 °C	5 Nm	5 Nm

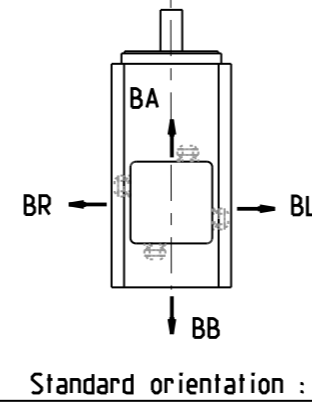
Weight

	NX420	NX430
No Brake	3.7 Kg	4.6 Kg
With Brake	4.5 Kg	5.4 Kg

ORIENTATION OF CONNECTOR



POWER TERMINAL BOX ORIENTATION



	Feedback options (feedback letter)	Resolver (A)	Low cost encoder (X)
NX420	L (mm)	175	
	L' (mm)	226	
NX430	L (mm)	200	
	L' (mm)	251	

N X 4 \_ \_ E \_ \_ R 6 \_ \_ \_

Torque range (depends on length)      Winding (depends on speed)

0 : Plain Shaft  
1 : key

0 : IP 64  
1 : IP 65

A : Resolver  
X : Low Cost Encoder

0 : Without Brake  
3 : Brake  
• : Thermal protection options on drawing 344993

See connectors pin out and encoder settings on drawing 344993

Sheet : 3/4

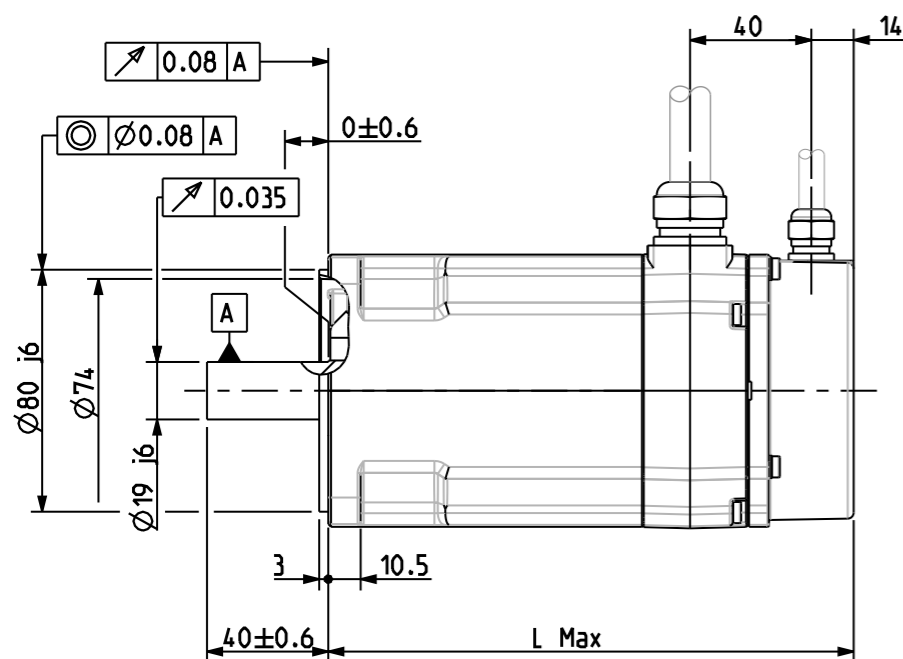
This document is the property of PARVEX. Transmission as well as reproduction or copy is not permitted without written authorisation.	General tolerances	Drawn	03/07/09	OD	Visa														
	DIN ISO 2768 mK	Modifications	B	AM23403	10/05/10	OD													
			A	AM23337	15/02/10	OD													

**Parker**  
**SSD Parvex**  
8 Avenue du lac. BP249  
21007-DIJON cedex-FRANCE  
www.SSDdrives.com

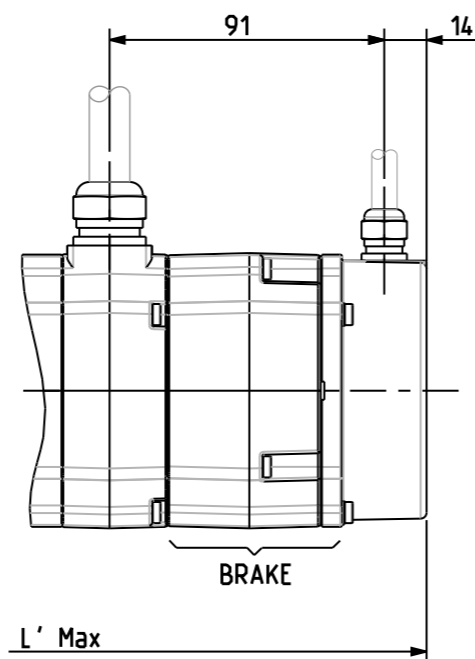
NX400  
TERMIANL BOX VARIANT

Format	F	E	S	G	I
A3	x				
344178					
B					

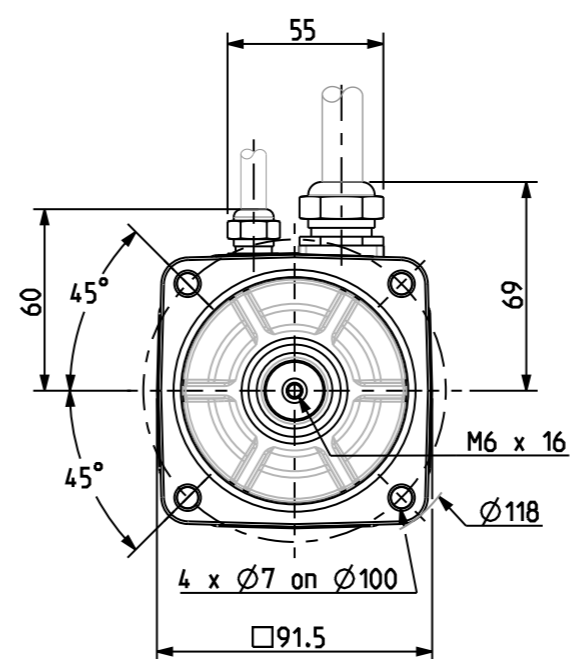
Feedback letter : A/X



Scale 2:5

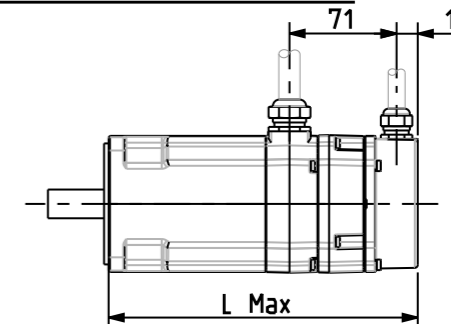


Scale 2:5

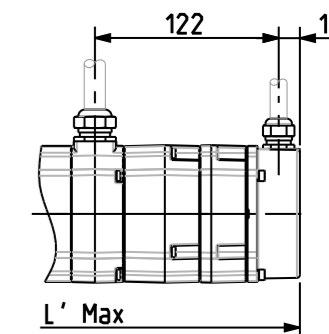


FEEDBACK OPTIONS

Feedback letter : Q/R/S/V/W

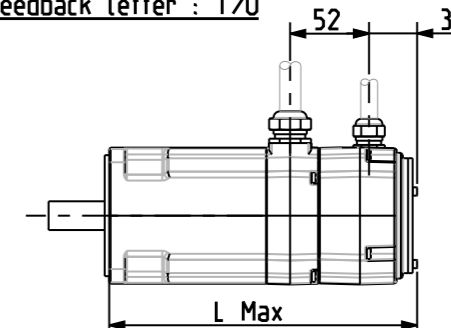


Scale 1:5

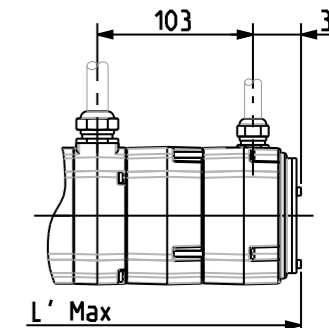


Scale 1:5

Feedback letter : T/U

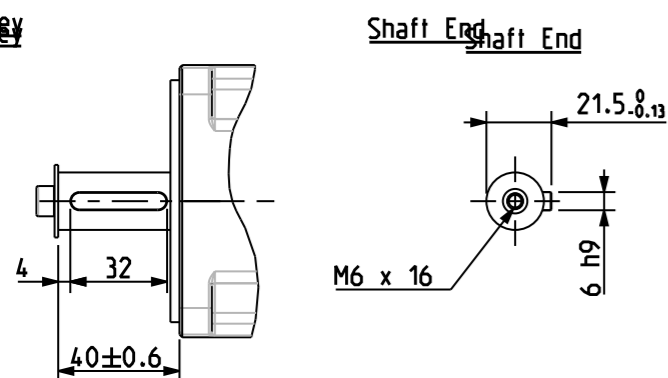


Scale 1:5



Scale 1:5

Key



Scale 2:5

**BRAKE** Supply voltage : 24V ±10%  
Static torque

	NX420	NX430
20 °C	6 Nm	6 Nm
100 °C	5 Nm	5 Nm

Weight

	NX420	NX430
No Brake	3.7 Kg	4.6 Kg
With Brake	4.5 Kg	5.4 Kg

	Feedback options (feedback letter)	Resolver (A)	Low cost encoder (X)	Hiperface SEL37 (Q)	Hiperface SKS36 (R)	Hiperface SKM36 (S)	Endat ECN1113 (V)	Endat EQN1125 (W)	Hiperface SRS50 (T)	Hiperface SRM50 (U)
NX420	L (mm)		175			206				205
	L' (mm)		226			261				256
NX430	L (mm)		200			231				230
	L' (mm)		251			286				281

N X 4 \_ \_ E \_ \_ R 1 \_ \_

Torque range (depends on length)

Winding (depends on speed)

0 : Plain Shaft  
1 : key

0 : IP 64  
1 : IP 65

A : Resolver  
Q : Hiperface Multiturn SEL37  
R : Hiperface Singleturn SKS36  
S : Hiperface Multiturn SKM36  
T : Hiperface Singleturn SRS50  
U : Hiperface Multiturn SRM50  
V : Endat Singleturn ECN1113  
W : Endat Multiturn EQN1125  
X : Low Cost Encoder

0 : Without Brake  
3 : Brake  
• : Thermal protection options on drawing 344993

See connectors pin out and encoder settings on drawing 344993

Sheet : 4/4

This document is the property of PARVEX. Transmission as well as reproduction or copy is not permitted without written authorisation.

General tolerances  
DIN ISO 2768 mK

Drawn	03/07/09	OD	Visa						
Modifications	B	AM23403 10/05/10 OD							
	A	AM23337 15/02/10 OD							

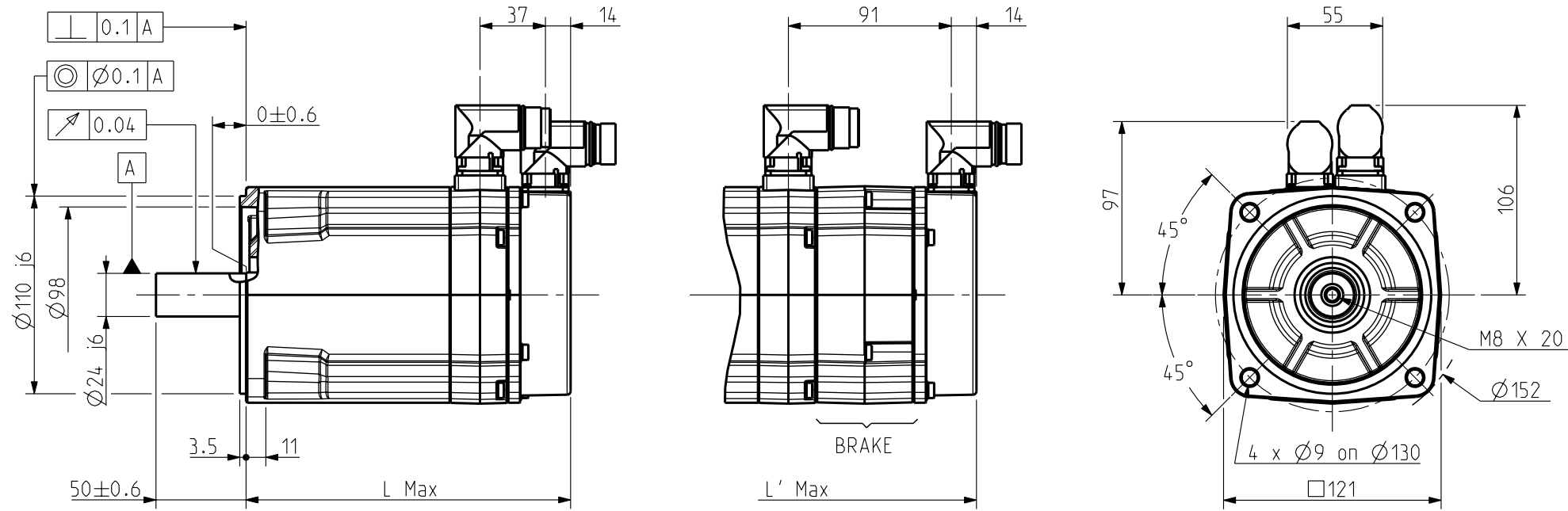
Scale  
2:5

**Parker**  
**SSD Parvex**  
8 Avenue du lac. BP249  
21007-DIJON cedex-FRANCE  
www.SSDdrives.com

NX400  
CABLE VARIANT

Format	F	E	S	G	I
A3	x				
344178					
B					

Feedback letter : A/X

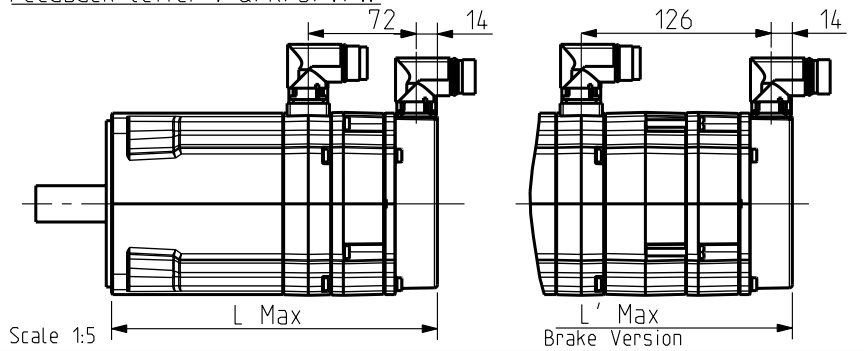


Scale 3:10

Brake Version

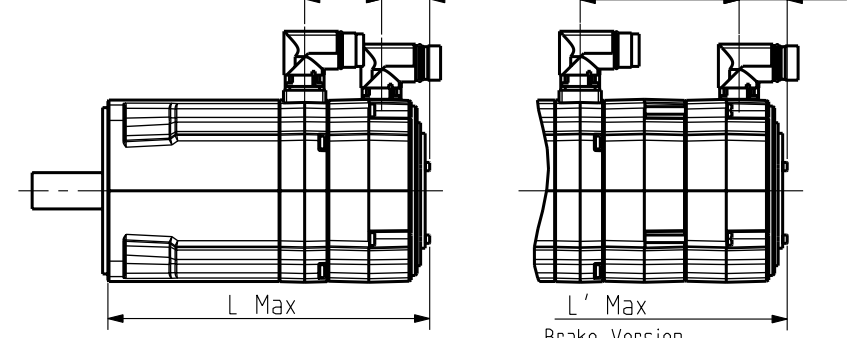
FEEDBACK OPTIONS

Feedback Letter : Q/R/S/V/W



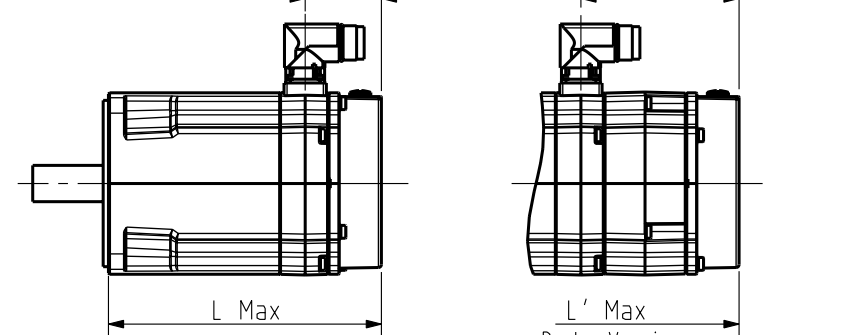
Scale 1:5

Feedback Letter : T/U



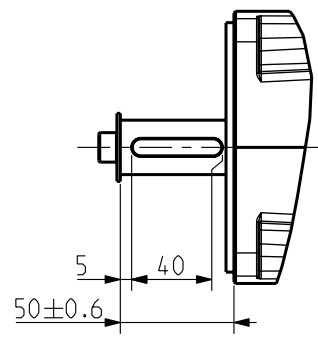
Scale 1:5

Feedback Letter : Y



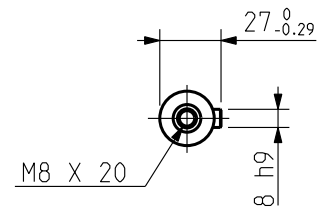
Scale 1:5

KEY



Scale 3:10

SHAFT END



BRAKE

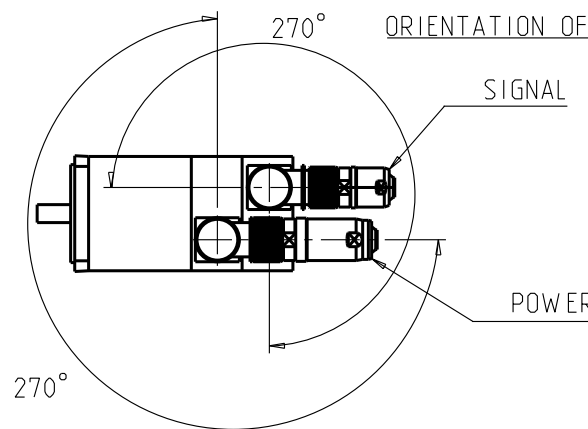
Supply voltage : 24V ±10%  
Static torque

	NX620	NX630
20°C	12 Nm	12 Nm
100°C	10 Nm	10 Nm

WEIGHT

	NX620	NX630
No brake	6.9 Kg	8.8 Kg
With brake	8 Kg	10 Kg

ORIENTATION OF CONNECTORS



	Feedback options (feedback letter)	Resolver (A)	Low Cost Encoder (X)	Hiperface SEL37 (Q)	Hiperface SKS36 (R)	Hiperface SKM36 (S)	Endat ECN1113 (V)	Endat EQN1125 (W)	Hiperface SRS50 (T)	Hiperface SRM50 (U)	Sensorless (Y)
NX620	L (mm)	181				216			214		181
	L' (mm)	236				271			269		236
NX630	L (mm)	210				245			243		210
	L' (mm)	265				300			298		265

N X 6 \_ \_ E \_ \_ R 7

- Torque range (depends on length)
- Winding (depends on speed)
- 0 : Plain Shaft
- 1 : key
- 0 : IP 64
- 1 : IP 65
- 0 : Without Brake
- 3 : Brake
- \* : Thermal protection options on drawing 344993

See connectors pin out and encoder settings on drawing 344993

sheet : 1/3

This document is the property of PARVEX. Transmission as well as reproduction or copy is not permitted without written authorisation.

General tolerances  
DIN ISO 2768 mK

Drawn	09/07/09	PR	Visa						
Modifications									
A	AM23337	15/02/10	OD						

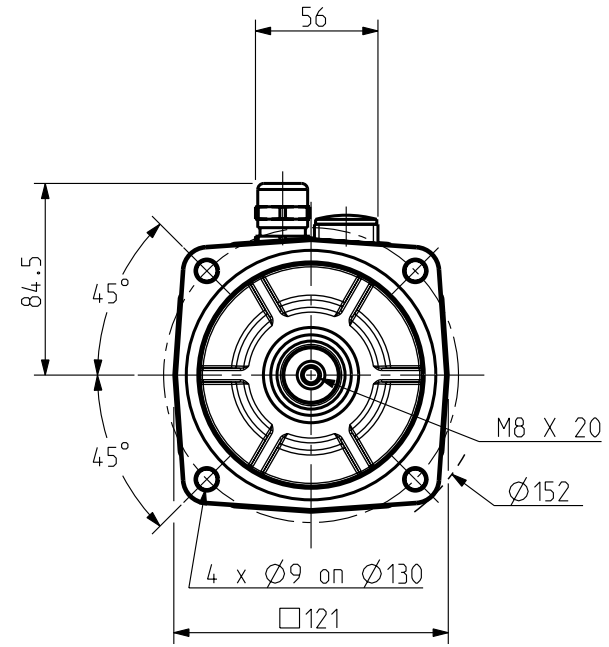
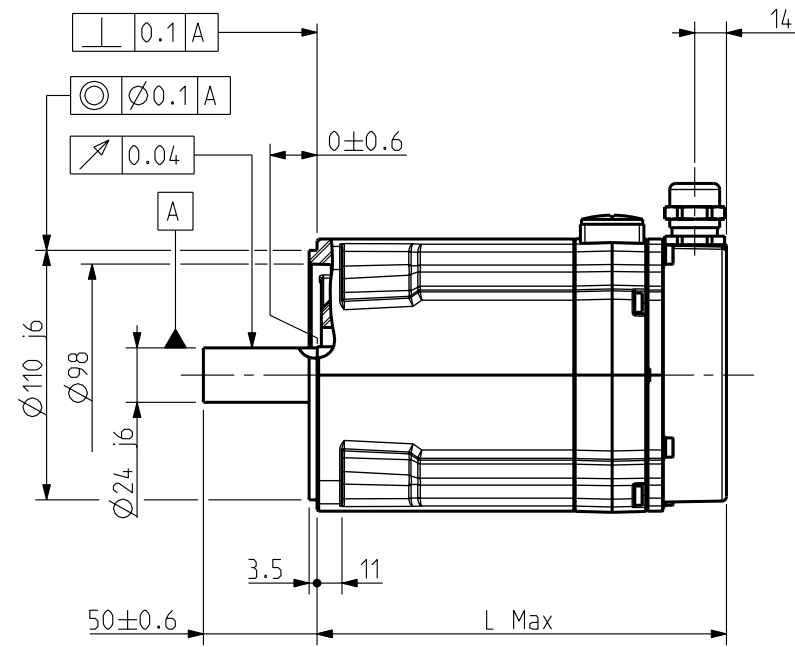
Scale  
3:10

**Parker**  
**SSD Parvex**  
8 Avenue du lac. BP249  
21007-DIJON cedex-FRANCE  
www.SSDdrives.com

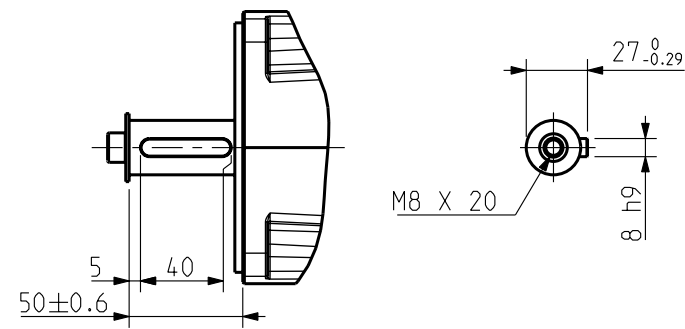
NX600  
CONNECTOR VARIANT

Format	F	E	S	G	I
A3	x				
344189					A

Feedback letter : Y



Scale 3:10



Scale 3:10

WEIGHT

	NX620	NX630
No brake	6.9 Kg	8.8 Kg
With brake	8 Kg	10 Kg

	Feedback options (feedback letter)	Sensorless (Y)
NX620	L (mm)	181
NX630	L (mm)	210

N X 6 \_ \_ E Y \_ R 6 \_ \_ \_

Torque range (depends on length)

Winding (depends on speed)

0 : Plain Shaft  
1 : key

0 : IP 64  
1 : IP 65

0 : Without Brake

\* : Thermal protection options on drawing 344993

See connectors pin out and encoder settings on drawing 344993

sheet : 2/3

This document is the property of PARVEX. Transmission as well as reproduction or copy is not permitted without written authorisation.

General tolerances  
DIN ISO 2768 mK

Drawn	09/07/09	PR	Visa					
Modifications								
A	AM23337	15/02/10	OD					

Scale  
3:10

**Parker**  
**SSD Parvex**  
8 Avenue du Lac. BP249  
21007-DIJON cedex-FRANCE  
www.SSDdrives.com

NX600  
SENSORLESS VARIANT

Format  
A3

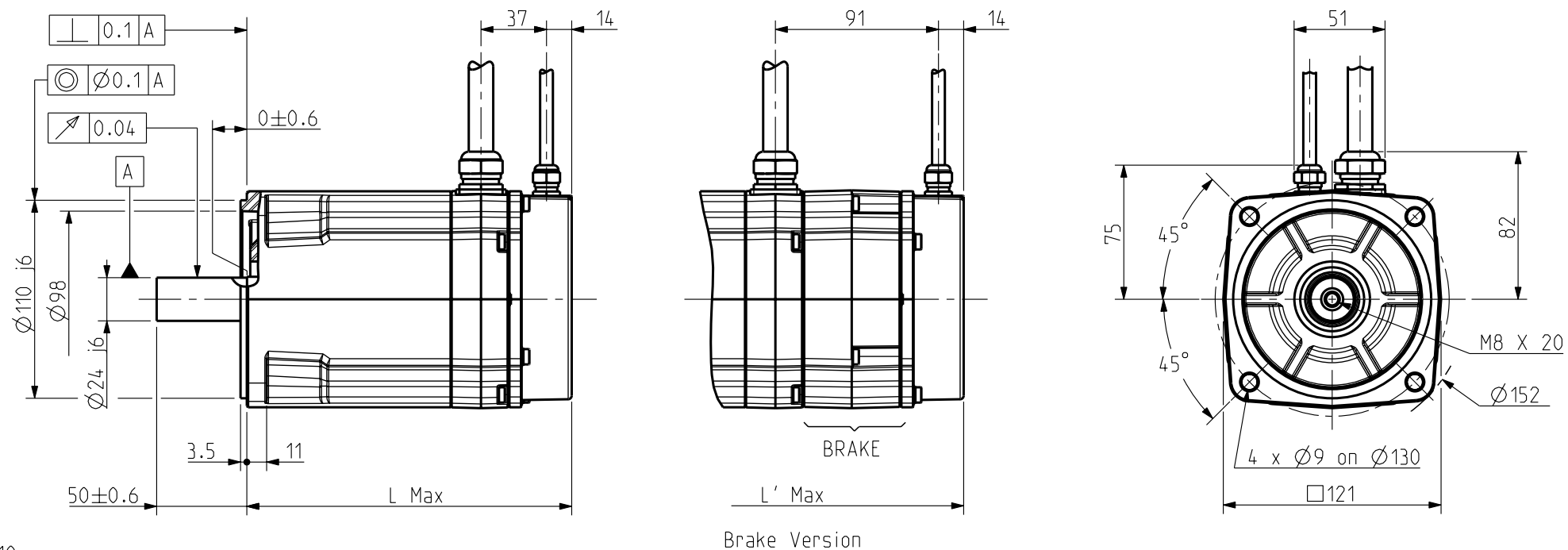
F	E	S	G	I
	x			

344189

A



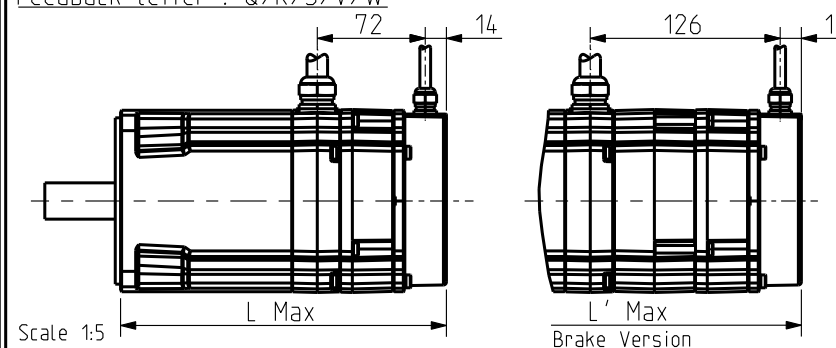
Feedback letter : A/X



Scale 3:10

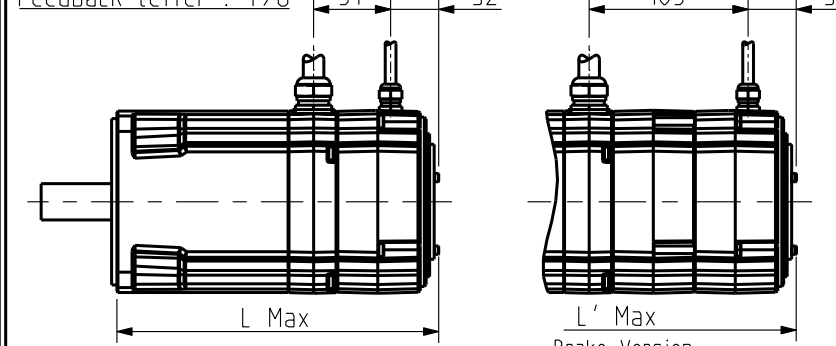
FEEDBACK OPTIONS

Feedback Letter : Q/R/S/V/W



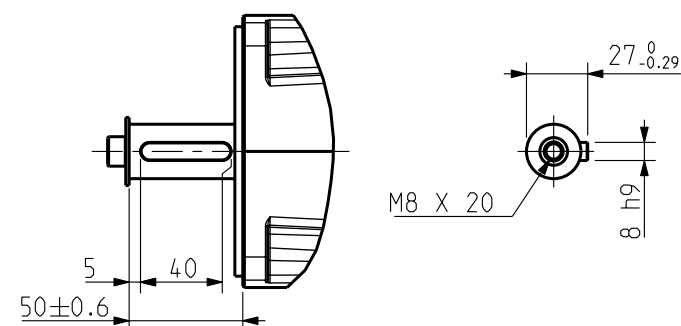
Scale 1:5

Feedback Letter : T/U



Scale 1:5

KEY



Scale 3:10

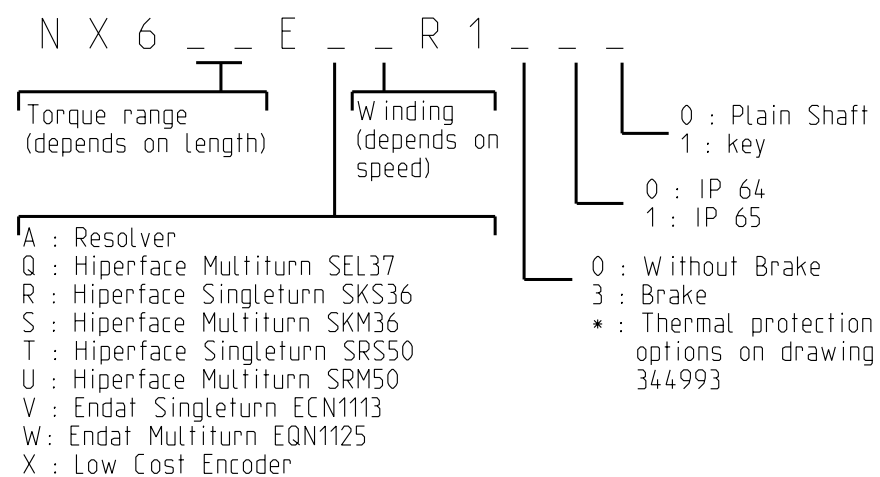
**BRAKE** Supply voltage : 24V ±10%  
Static torque

	NX620	NX630
20°C	12 Nm	12 Nm
100°C	10 Nm	10 Nm

**WEIGHT**

	NX620	NX630
No brake	6.9 Kg	8.8 Kg
With brake	8 Kg	10 Kg

	Feedback options (feedback letter)	Resolver (A)	Low Cost Encoder (X)	Hiperface SEL37 (Q)	Hiperface SKS36 (R)	Hiperface SKM36 (S)	Endat ECN1113 (V)	Endat EQN1125 (W)	Hiperface SRS50 (T)	Hiperface SRM50 (U)	Sensorless (Y)
NX620	L (mm)	181				216			214		181
	L' (mm)	236				271			269		236
NX630	L (mm)	210				245			243		210
	L' (mm)	265				300			298		265

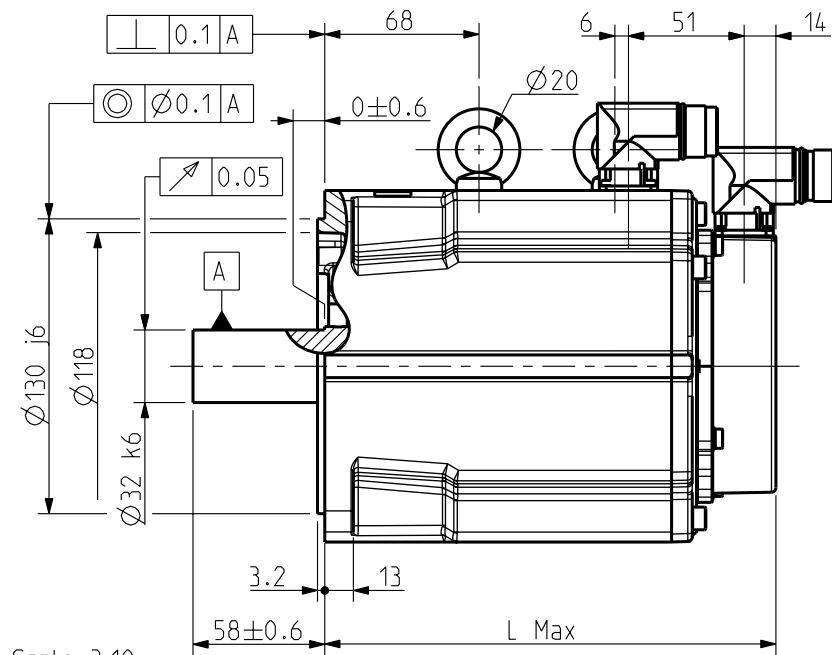


See connectors pin out and encoder settings on drawing 344993

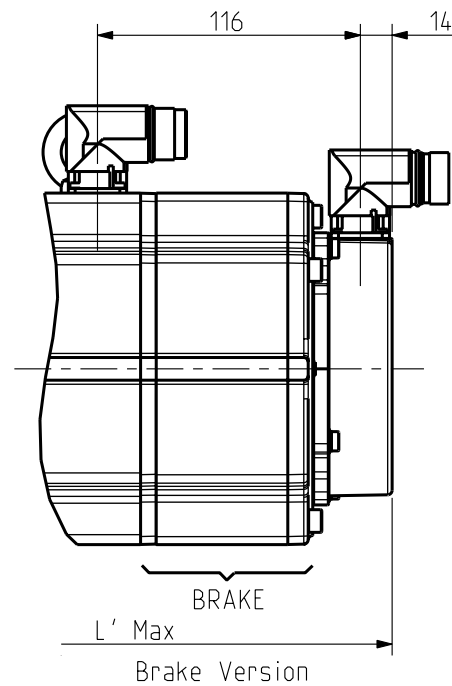
sheet : 3/3

This document is the property of PARVEX. Transmission as well as reproduction or copy is not permitted without written authorisation.	General tolerances DIN ISO 2768 mK	Drawn 09/07/09 PR Visa	Scale 3:10	SSD Parvex 8 Avenue du Lac. BP249 21007-DIJON cedex-FRANCE www.SSDdrives.com	NX600 CABLE VARIANT	Format A3	F E S G I x	344189	A
	Modifications A AM23337 15/02/10 OD								

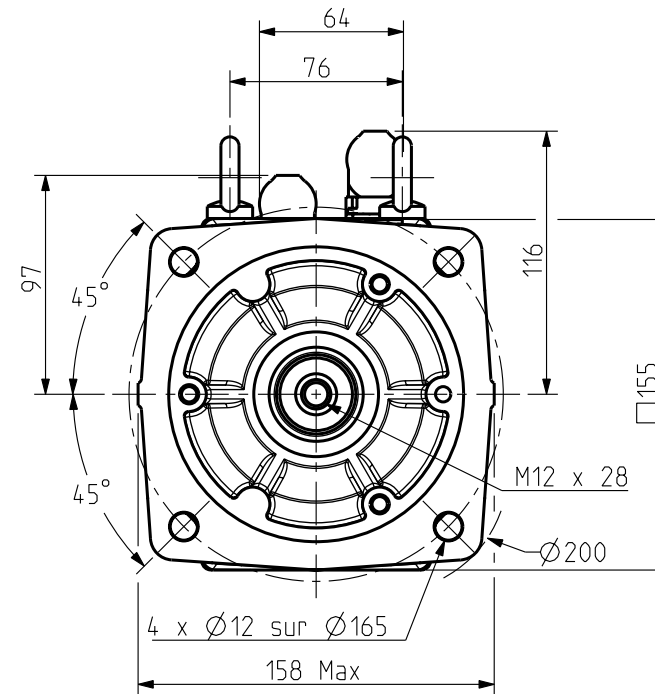
Feedback letter : A/X



Scale 3:10

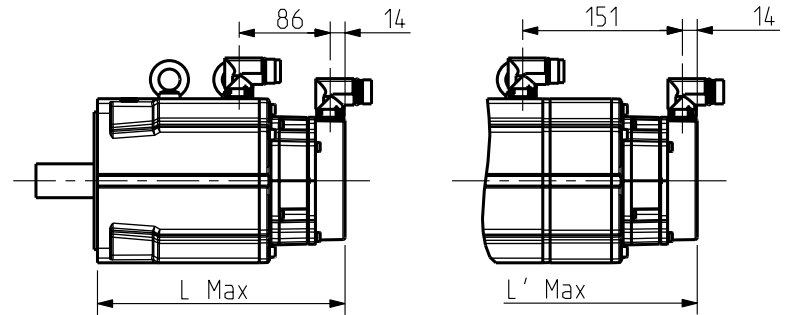


Scale 3:10



FEEDBACK OPTIONS

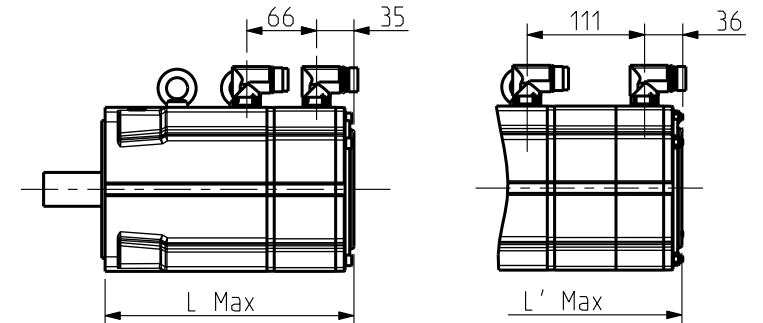
Feedback letter : Q/R/S/V/W



Scale 7:50

Scale 7:50

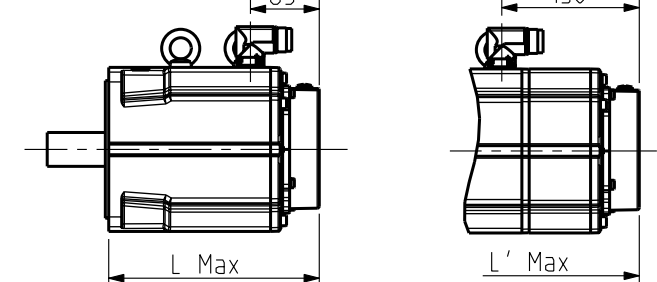
Feedback letter : T/U



Scale 7:50

Scale 7:50

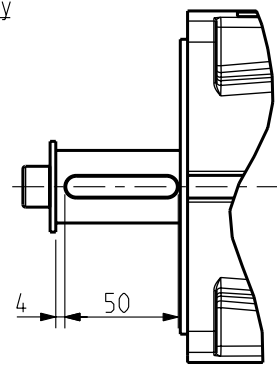
Feedback letter : Y



Scale 7:50

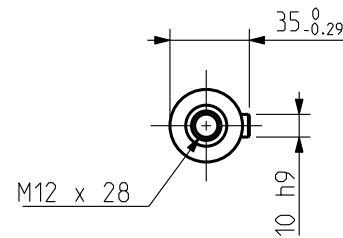
Scale 7:50

Key



Scale 3:10

Shaft End



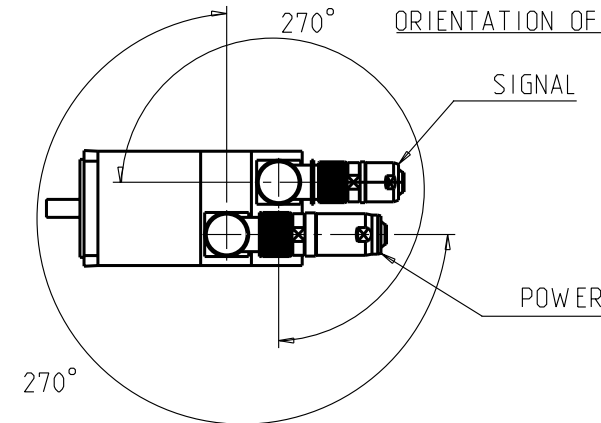
BRAKE Supply voltage : 24V ±10%  
Static torque

	NX820	NX840	NX860
20 °C	36 Nm	36 Nm	36 Nm
100 °C	32 Nm	32 Nm	32 Nm

Weight

	NX820	NX840	NX860
No Brake	13 Kg	20 Kg	27 Kg
With Brake	16.5 Kg	23.5 Kg	30.5 Kg

ORIENTATION OF CONNECTORS



	Feedback options (feedback letter)	Resolver (A)	Low cost encoder (X)	Hiperface SEL37 (Q)	Hiperface SKS36 (R)	Hiperface SKM36 (S)	Endat ECN1113 (V)	Endat EQN1125 (W)	Hiperface SRS50 (T)	Hiperface SRM50 (U)	Sensorless (Y)
NX820	L (mm)	200				235			236		200
	L' (mm)	266				301			282		266
NX840	L (mm)	260				295			296		260
	L' (mm)	326				361			342		326
NX860	L (mm)	320				355			356		320
	L' (mm)	386				421			402		386

N X 8 \_ \_ E \_ \_ R 7 \_ \_ \_

Torque range (depends on length)

Winding (depends on speed)

0 : Plain Shaft  
1 : key

0 : IP 64  
1 : IP 65

A : Resolver  
Q : Hiperface Multiturn SEL37  
R : Hiperface Singleturn SKS36  
S : Hiperface Multiturn SKM36  
T : Hiperface Singleturn SRS50  
U : Hiperface Multiturn SRM50  
V : Endat Singleturn ECN1113  
W : Endat Multiturn EQN1125  
X : Low Cost Encoder  
Y : Sensorless

See connectors pin out and encoder settings on drawing 344993

Sheet:1/4

This document is the property of PARVEX. Transmission as well as reproduction or copy is not permitted without written authorisation.

General tolerances

DIN ISO 2768 mK

Drawn  
Modifications

09/07/09	YG	Visa					
A	AM23337	15/02/10	OD				



Scale

3:10



SSD Parvex

8 Avenue du lac. BP249  
21007-DIJON cedex-FRANCE  
www.SSDdrives.com

NX800

CONNECTOR VARIANT

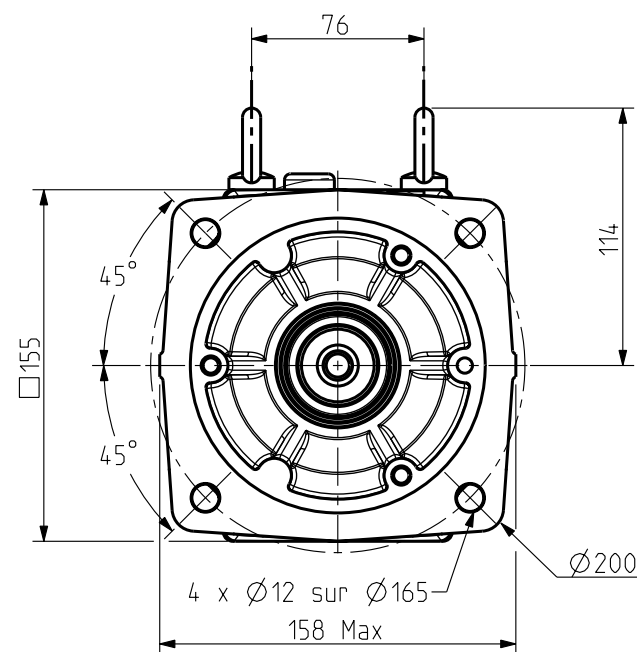
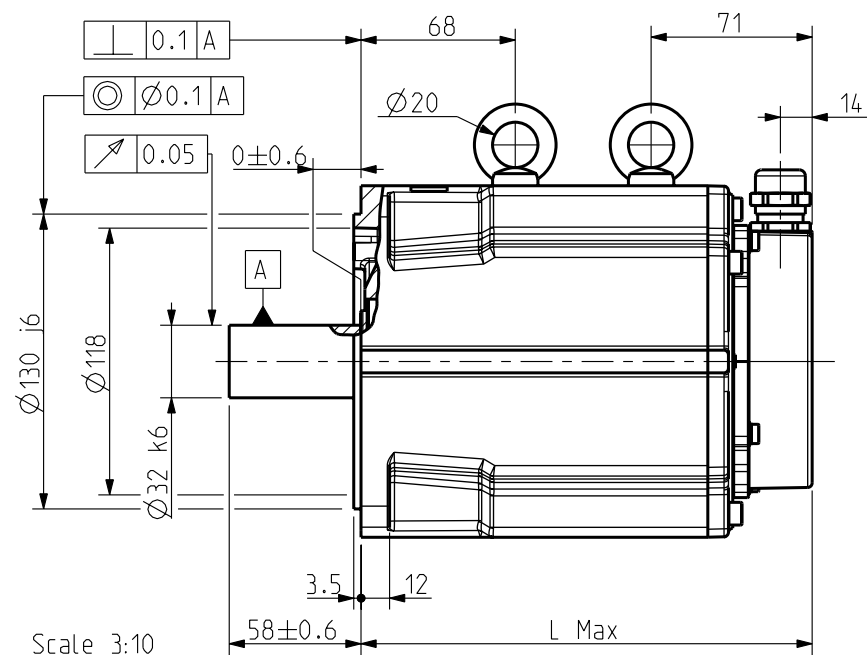
Format  
A3

F	E	S	G	I
	x			

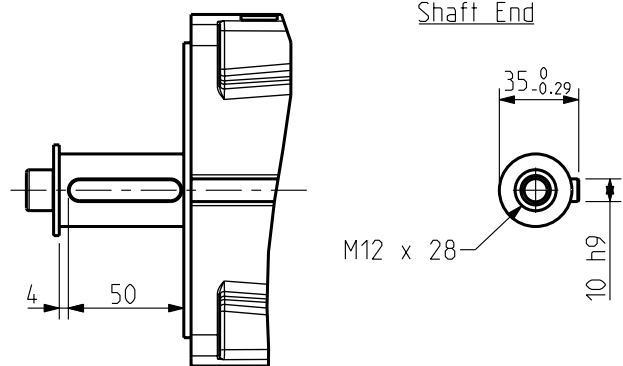
344469

A

Feedback letter : Y



Key



Weight

	NX820	NX840	NX860
No Brake	13.5 Kg	20.5 Kg	27.5 Kg

Scale 3:10

	Feedback options (feedback letter)	Sensorless (Y)
NX820	L (mm)	200
NX840	L (mm)	260
NX860	L (mm)	320

N X 8 \_ \_ E Y \_ R 6 \_ \_ \_

Torque range (depends on length)

Winding (depends on speed)

0 : Plain Shaft  
1 : key

0 : IP 64  
1 : IP 65

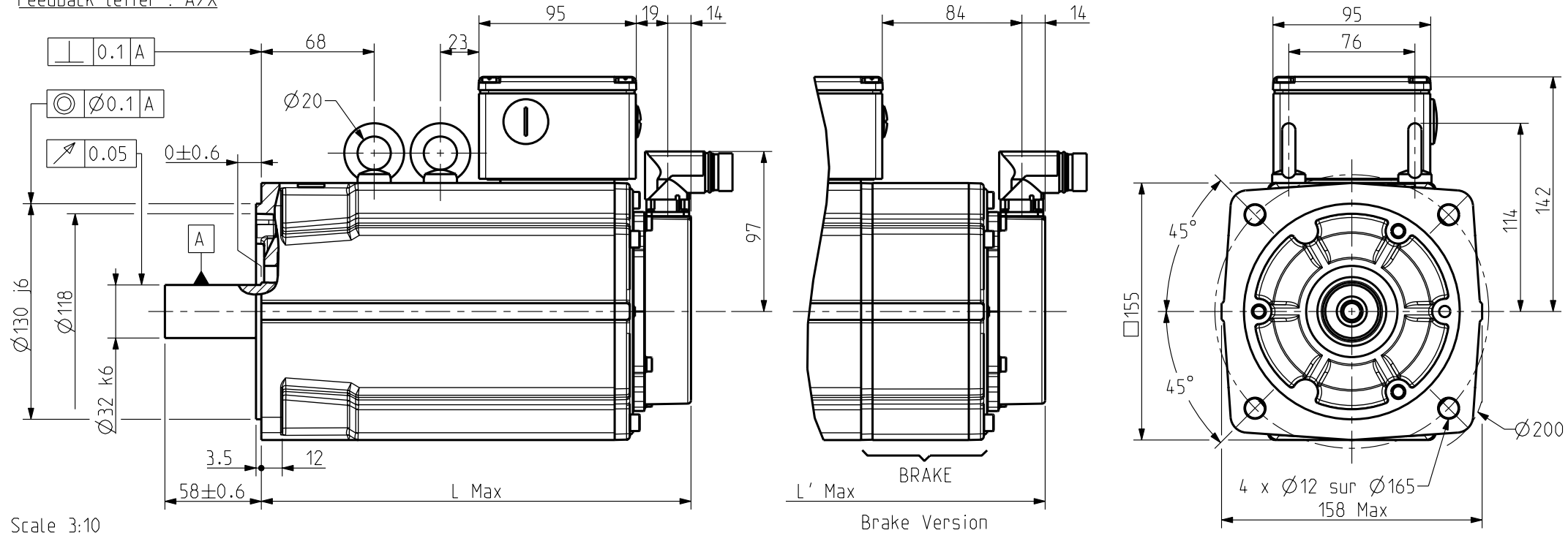
0 : Without Brake  
3 : Brake  
\* : Thermal protection options on drawing 344993

See connectors pin out and encoder settings on drawing 344993

Sheet:2/4

This document is the property of PARVEX. Transmission as well as reproduction or copy is not permitted without written authorisation.	General tolerances DIN ISO 2768 mK	Drawn 09/07/09 YG Visa	Scale 3:10	SSD Parvex 8 Avenue du lac. BP249 21007-DIJON cedex-FRANCE www.SSDdrives.com	NX800 SENSORLESS VARIANT	Format A3 F E S G I x	344469	A
	Modifications A AM23337 15/02/10 OD							

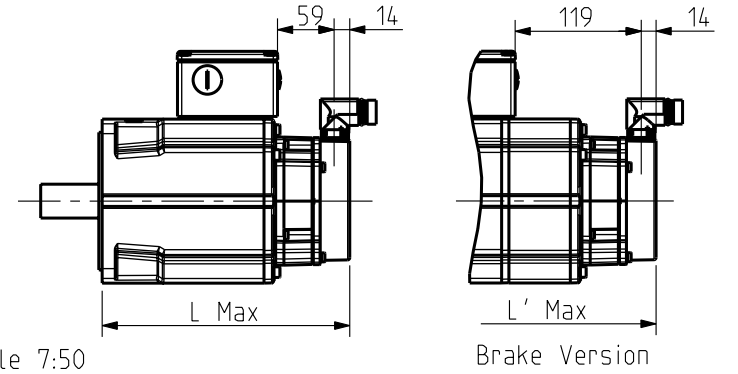
Feedback letter : A/X



Scale 3:10

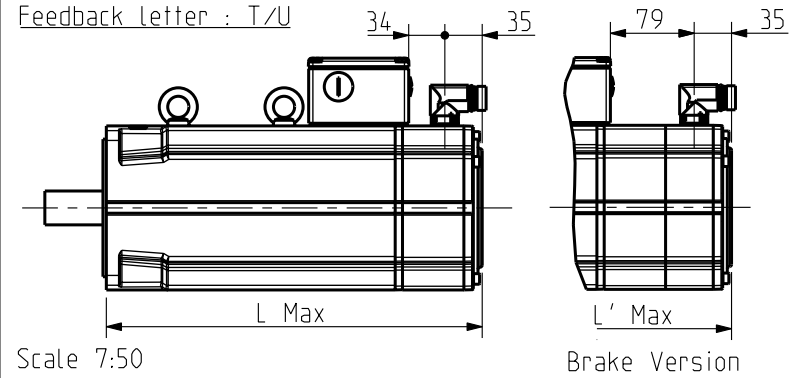
FEEDBACK OPTIONS

Feedback letter : Q/R/S/V/W



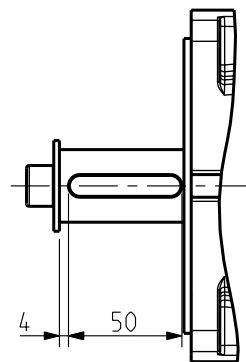
Scale 7:50

Feedback letter : T/U



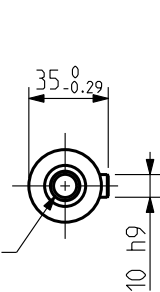
Scale 7:50

Key



Scale 3:10

Shaft End



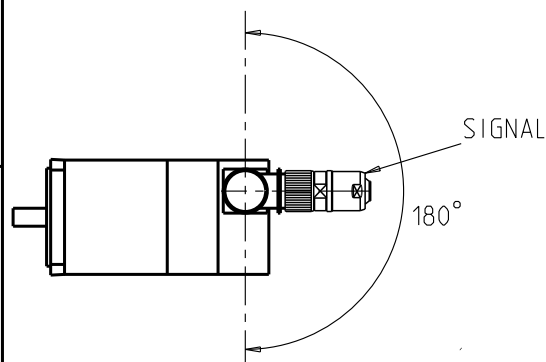
BRAKE Supply voltage : 24V ±10%  
Static torque

	NX820	NX840	NX860
20 °C	36 Nm	36 Nm	36 Nm
100 °C	32 Nm	32 Nm	32 Nm

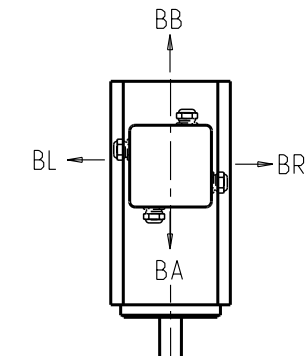
Weight

	NX820	NX840	NX860
No Brake	13.5 Kg	20.5 Kg	27.5 Kg
With Brake	17 Kg	24 Kg	31 Kg

ORIENTATION OF CONNECTOR

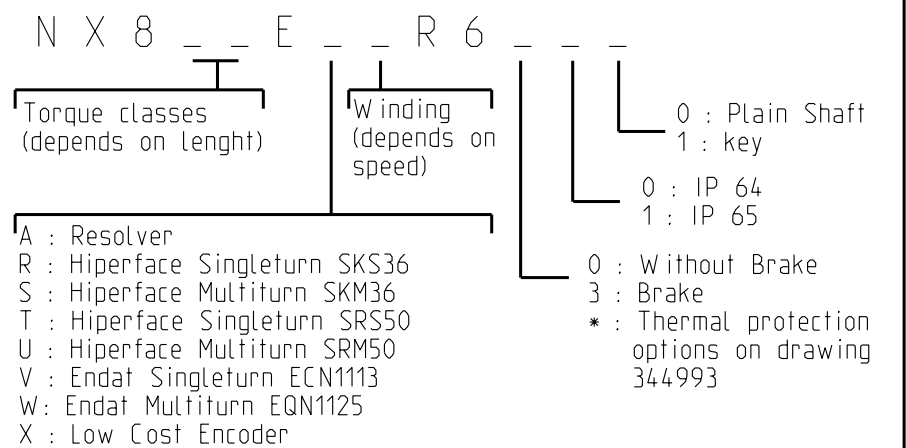


POWER TERMINAL BOX ORIENTATION



Standard orientation : BR

	Feedback options (feedback letter)	Resolver (A)	Low cost encoder (X)	Hiperface SEL37 (Q)	Hiperface SKS36 (R)	Hiperface SKM36 (S)	Endat ECN1113 (V)	Endat EQN1125 (W)	Hiperface SRS50 (T)	Hiperface SRM50 (U)	Sensorless (Y)
NX820	L (mm)	200				235			236		200
	L' (mm)	266				301			282		/
NX840	L (mm)	260				295			296		260
	L' (mm)	326				361			342		/
NX860	L (mm)	320				355			356		320
	L' (mm)	386				421			402		/



See connectors pin out and encoder settings on drawing 344993

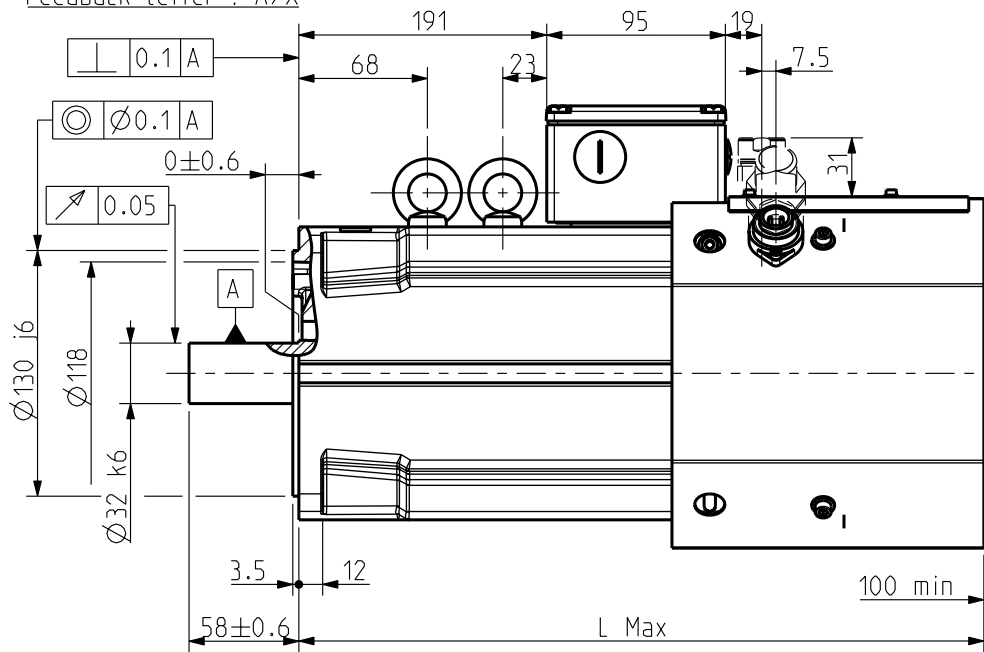
This document is the property of PARVEX. Transmission as well as reproduction or copy is not permitted without written authorisation.	General tolerances	Drawn	09/07/09	YG	Visa																
	DIN ISO 2768 mK	Modifications	A	AM23337	15/02/10	OD															

**Parker**  
**SSD Parvex**  
8 Avenue du Lac. BP249  
21007-DIJON cedex-FRANCE  
www.SSDdrives.com

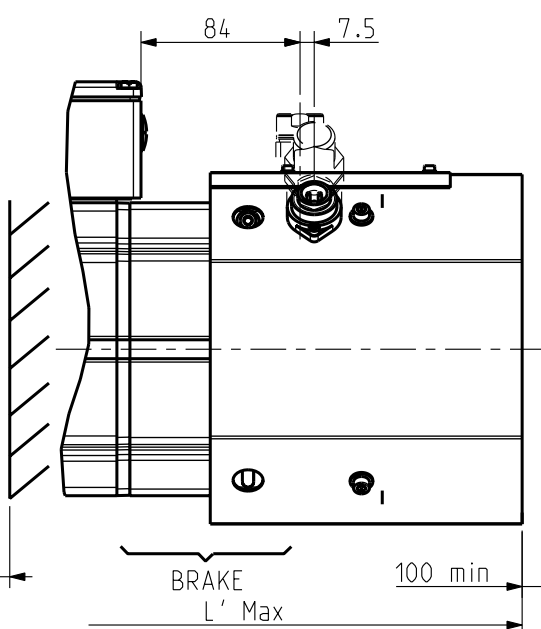
**NX800**  
**TERMINAL BOX VARIANT**

Format A3  
344469  
A

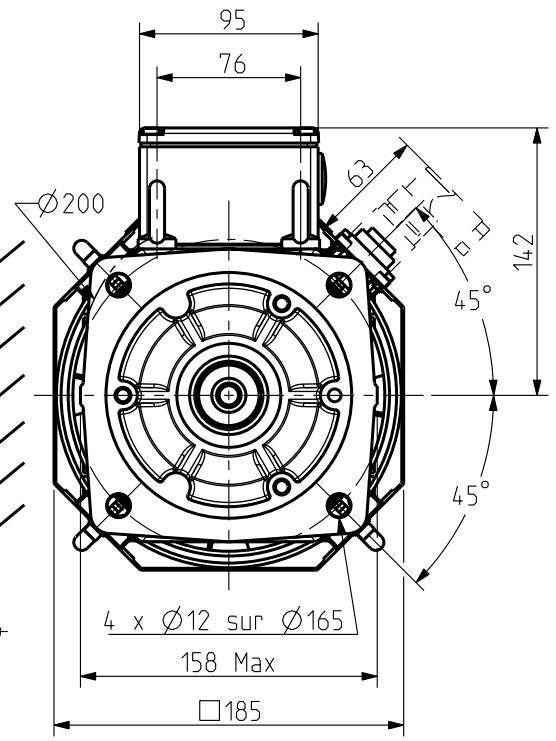
Feedback letter : A/X



Scale 1:4

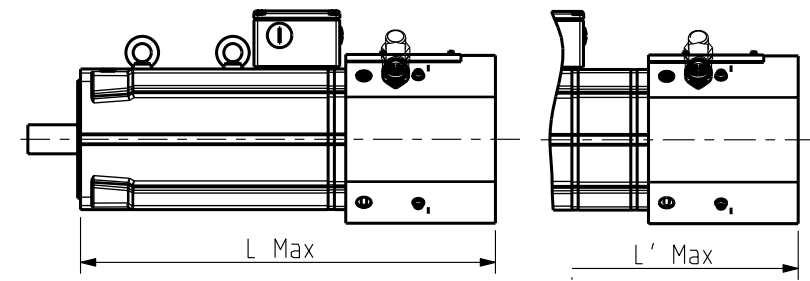


Brake Version



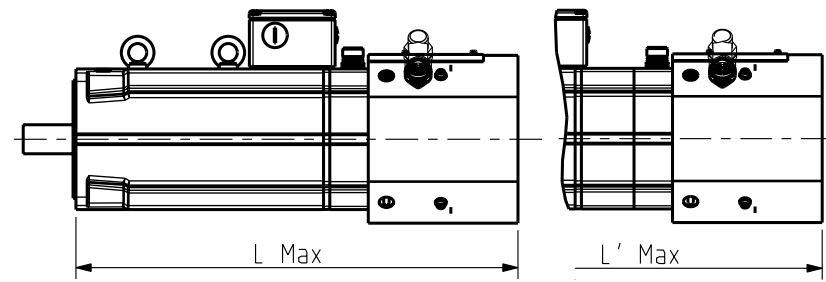
FEEDBACK OPTIONS

Feedback letter : Q/R/S/V/W



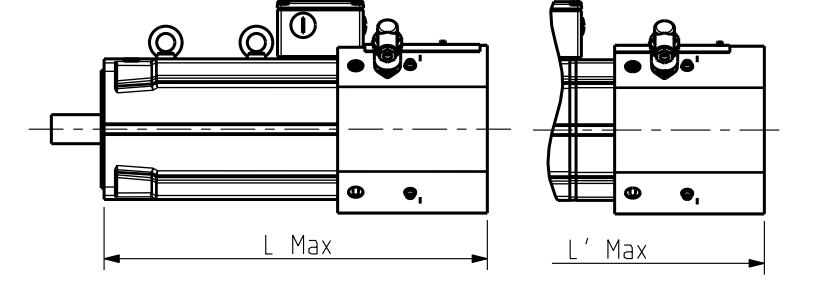
Scale 3:25

Feedback letter : T/U

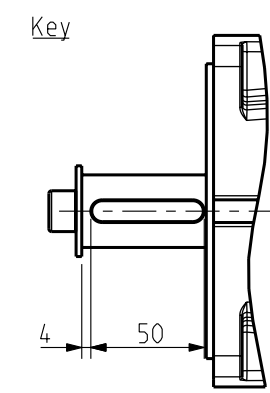


Scale 3:25

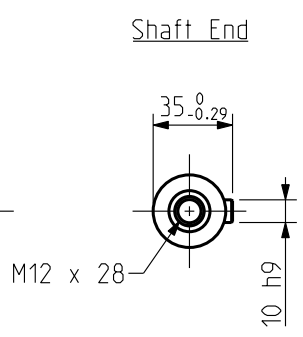
Feedback letter : Y



Scale 3:25



Scale 3:10



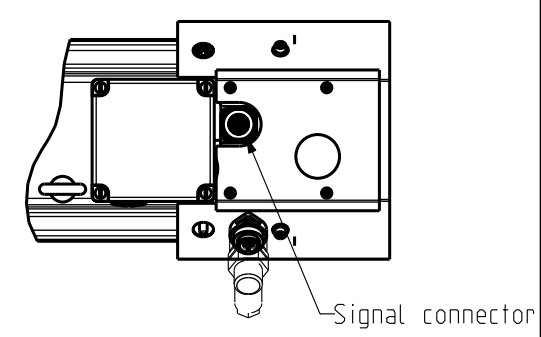
BRAKE Supply voltage : 24V ±10%  
Static torque

	NX860
20 °C	36 Nm
100 °C	32 Nm

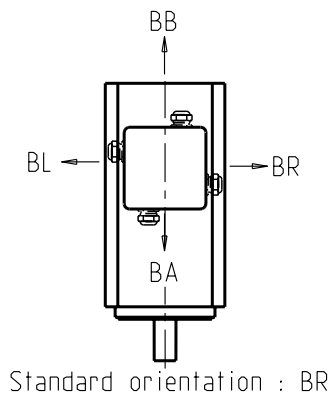
Weight

	NX860
No Brake	30.5 Kg
With Brake	34 Kg

TOP VIEW



POWER TERMINAL BOX ORIENTATION



Standard orientation : BR

	Feedback options (feedback letter)	Resolver (A)	Low cost encoder (X)	Hiperface SEL37 (Q)	Hiperface SKS36 (R)	Hiperface SKM36 (S)	Endat ECN1113 (V)	Endat EQN1125 (W)	Hiperface SRS50 (T)	Hiperface SRM50 (U)	Sensorless (Y)
NX860	L (mm)	424			424		460		490		424
	L' (mm)		490		490		525		555		490

N X 8 \_ \_ V \_ \_ R 9 \_ \_ \_  
N X 8 \_ \_ V \_ \_ R 5 \*\* \_ \_ \_

Torque range (depends on length)      Winding (depends on speed)

0 : Plain Shaft  
1 : key

0 : IP 64  
1 : IP 65

A : Resolver  
Q : Hiperface Multiturn SEL37  
R : Hiperface Singleturn SKS36  
S : Hiperface Multiturn SKM36  
T : Hiperface Singleturn SRS50  
U : Hiperface Multiturn SRM50  
V : Endat Singleturn ECN1113  
W : Endat Multiturn EQN1125  
X : Low Cost Encoder  
Y : Sensorless

0 : Without Brake  
3 : Brake  
\* : Thermal protection options on drawing 344993

\*\* UL TERMINAL BOX AND VENTILATION

See connectors pin out and encoder settings on drawing 344993

Sheet:4/4

This document is the property of PARVEX. Transmission as well as reproduction or copy is not permitted without written authorisation.

General tolerances  
DIN ISO 2768 mK

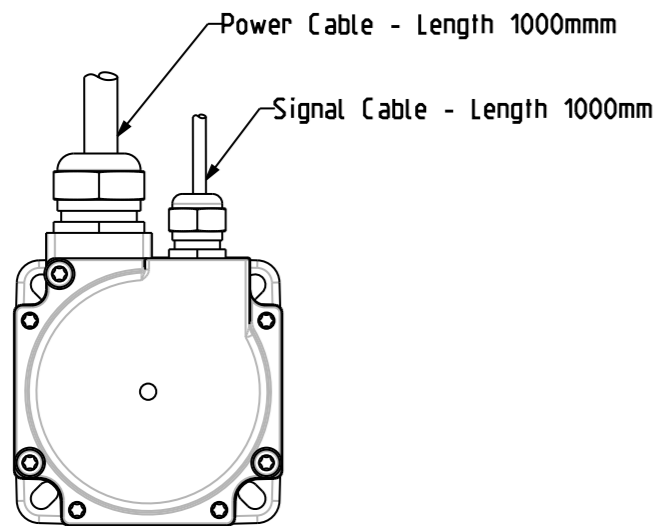
Drawn	09/07/09	YG	Visa						
Modifications									
A	AM23337	15/02/10	OD						

Scale  
1:4

**Parker**  
**SSD Parvex**  
8 Avenue du Lac. BP249  
21007-DIJON cedex-FRANCE  
www.SSDdrives.com

NX800  
TERMINAL BOX - VENTILATED

Format	F	E	S	G	I
A3	x				
344469					
A					



N X - - - E - - R 1

Torque range  
(depends on length)

Winding  
(depends on speed)

0 : Plain Shaft  
1 : key  
0 : IP 64  
1 : IP 65

A : Resolver  
Q : Hiperface Multiturn SEL 37 - 16  
R : Hiperface Singleturn SKS 36 - 128  
S : Hiperface Multiturn SKM 36 - 128

T : Hiperface Singleturn SRS 50 - 1024  
U : Hiperface Multiturn SRM 50 - 1024  
V : Endat Singleturn ECN 1113  
W : Endat Multiturn EQN 1125  
X : Low Cost Encoder - 2048

Temperature Sensor on Power Connector

0 : Base  
1 : PTC  
2 : Thermoswitch  
6 : KTY  
3 : Brake  
4 : Brake + PTC  
5 : Brake + Thermoswitch  
7 : Brake + KTY

Temperature Sensor on Signal Connector

A : PTC  
B : Thermoswitch  
C : KTY  
D : Brake + PTC  
E : Brake + Thermoswitch  
F : Brake + KTY

**POWER CABLE**

Motor Size : NX1/2  
Cable diameter :  $\varnothing 9.5$   
Shielded Pairs  
POWER : 4 x 0.5 mm<sup>2</sup>  
black : phase U  
white : phase V  
red : phase W  
yellow/green : ground

ACCESSORIES : 2 x ( 2 x 0.5 mm<sup>2</sup> )

Yellow : No connection  
Orange : No connection  
Green Blue : Brake -  
Green Red : Brake +

} If the option is required

Motor Size : NX3/4/6  
Cable diameter :  $\varnothing 11.8$   
Twisted and shielded pairs + overall shield

POWER : 4 x 1.5 mm<sup>2</sup>

black 1 : phase U  
black 2 : phase V  
black 3 : phase W  
yellow/green : ground

ACCESSORIES : 1 x ( 2 x 1 mm<sup>2</sup> )

Black : Brake -  
White : Brake + } If the option is required

**SIGNAL CABLE**

Motor Size : NX1/2  
Feedback Letter : A  
Cable diameter :  $\varnothing 7.1$   
Twisted and shielded pairs

SIGNAL CABLE : 6 x 0.24 mm<sup>2</sup>

Red/white : R1  
Black/white : R2  
Red : S1  
Yellow : S2  
Black : S3  
Blue : S4

Motor Size : NX3/4/6  
Feedback Letter : A  
Cable diameter :  $\varnothing 10$   
Twisted and shielded pairs  
+ overall shield

SIGNAL CABLE : 4 x (2x 0.25 mm<sup>2</sup>)

Pair 1 : (Black : S3 Red : S1)  
Pair 2 : (Black : S2 Green : S4)  
Pair 3 : (Black : R1 White : R2)

Motor Size : NX2/3/4/6  
Feedback Letter : Q/R/S/T/U  
Cable diameter :  $\varnothing 10$   
Twisted and shielded pairs + overall shield

SIGNAL CABLE : 4 x (2x 0.25 mm<sup>2</sup>)

Pair 1 : (Black : Gnd Red : Us)  
Pair 2 : (Black : Data- Green : Data+)  
Pair 3 : (Black : Ref Sin White : +Sin)  
Pair 4 : (Black : Ref Cos Blue : +Cos)

Motor Size : NX3/4/6  
Feedback Letter : V/W  
Cable diameter :  $\varnothing 10.8$   
Twisted and shielded pairs  
+ overall shield

SIGNAL CABLE : 5 x (2x 0.25 mm<sup>2</sup>)

Pair 1 : (Black : Data\ Red : Data)  
Pair 2 : (Black : A- Green : A+)  
Pair 3 : (Black : 0V White : Up 5V)  
Pair 4 : (Black : B- Blue : B+)  
Pair 5 : (Black : Clock\ Yellow : Clock)

Motor Size : NX2/3/4/6  
Feedback Letter : X  
Cable diameter :  $\varnothing 10.8$   
Twisted and shielded pairs  
+ overall shield

SIGNAL CABLE : 5 x (2x 0.25 mm<sup>2</sup>)

Pair 1 : (Black : GND Red : VCC)  
Pair 2 : (Black : A\ Green : A)  
Pair 3 : (Black : B\ Blue : B)  
Pair 4 : (Black : Z White : U)  
Pair 5 : (Black : V Yellow : W)

**ENCODER SETTINGS**

Feedback Letter : A

Motor powered by direct current at the current nominal value (W+ and V-), the shift is 90° electrical.

Feedback Letter : Q

Motor powered by direct current at the current nominal value (W+ and V-), value in encoder memory is 26

Feedback Letter : R/S

Motor powered by direct current at the current nominal value (W+ et V-), value in encoder memory is 205

Feedback Letter : T/U

Motor powered by direct current at the current nominal value (W+ et V-), value in encoder memory is 1638

Feedback Letter : V/W

Motor powered by direct current at the current nominal value (W+ et V-), value in encoder memory is 410

Feedback Letter : X

Engine driven clockwise shaft end side. Switching signal V is in phase with FEM UV.

This document is the property of PARVEX. Transmission as well as reproduction or copy is not permitted without written authorisation.

General tolerances  
DIN ISO 2768 mK

Drawn	03/07/09	YG	Visa				
Modifications							
B	AM 23403 - 10/05/10 - OD						
A	AM 23392 - 03/05/01 - YG						

Scale	/
-------	---

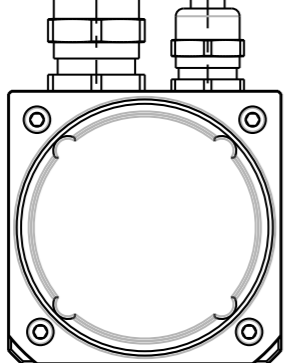
**Parker**  
**SSD Parvex**  
8 Avenue du Lac, BP249  
21007-DIJON cedex-FRANCE  
www.SSDdrives.com

**NX MOTORS CONNECTIONS**  
CABLE VARIANT

Format	A3	F	E	S	G	I	
		x					
344993							B

Power output  
Output wires inside  
Ø9 PVC sheath  
Overall shielding  
connected to ground  
Wire, shielding, sheath:  
Ends not stripped

Signal output \*\*  
Output wires inside  
Ø7 PVC sheath  
Overall shielding  
connected to ground  
Wire, shielding, sheath:  
Ends not stripped



NX1 and NX2 ONLY

N X - - - E - - R 4

Torque range  
(depends on length)

Winding  
(depends on speed)

A : Resolver  
Q : Hiperface Multiturn SEL 37 - 16

R : Hiperface Singleturn SKS 36 - 128  
S : Hiperface Multiturn SKM 36 - 128  
X : Low Cost Encoder - 2048

0 : Plain Shaft  
1 : key  
0 : IP 64  
1 : IP 65

Temperature Sensor on Power Connector

0 : Base  
1 : PTC  
2 : Thermoswitch  
6 : KTY  
3 : Brake  
4 : Brake + PTC  
5 : Brake + Thermoswitch  
7 : Brake + KTY

Temperature Sensor on Signal Connector

A : PTC  
B : Thermoswitch  
C : KTY  
D : Brake + PTC  
E : Brake + Thermoswitch  
F : Brake + KTY

\*\* Except for encoders Q/R/S : the output cable is the encoder's cable

POWER CABLE

Motor Size : NX1/2  
Length 1000 mm  
POWER : 4 x 0.5 mm<sup>2</sup>

black : phase U  
white : phase V  
red : phase W  
yellow/green : ground

BRAKE : 2 x 0.14 mm<sup>2</sup>  
green/red : +  
green/blue : -

} If the option is required

Brake wires outside shielding

SIGNAL CABLE

Motor Size : NX1/2  
Feedback letter : A  
Length 1000 mm  
SIGNAL : 6 x 0.08 mm<sup>2</sup>, AWG28

red/white : R1  
yellow/white : R2  
black : S1  
yellow : S2  
red : S3  
blue : S4

Motor Size : NX2  
Feedback Letter : X  
Encoder cable  
Length : 0.10m  
SIGNAL : 14 x AWG26

red : VCC  
black : GND  
blue : A  
black/blue : A\  
green : B  
black/green : B\  
purple : Z  
black/purple : Z\  
brown : U  
black/brown : U\  
grey : V  
black/grey : V\  
white : W  
black/white : W\  
red : Us  
white : +Sin  
brown : RefSin  
pink : +Cos

Motor Size : NX2  
Feedback Letter : Q/R/S  
Encoder cable unshielded  
Length : 0.15m  
SIGNAL : 8 x 0.24mm<sup>2</sup>

black : Ref Cos  
blue : GND  
grey or yellow : Data+  
green or purple : Data-

ENCODER SETTINGS

Feedback Letter : A

Motor powered by direct current at the current nominal value (W+ and V-), the shift is 90° electrical.

Feedback Letter : Q

Motor powered by direct current at the current nominal value (W+ and V-), value in encoder memory is 26

Feedback Letter : R/S

Motor powered by direct current at the current nominal value (W+ et V-), value in encoder memory is 205

Feedback Letter : X

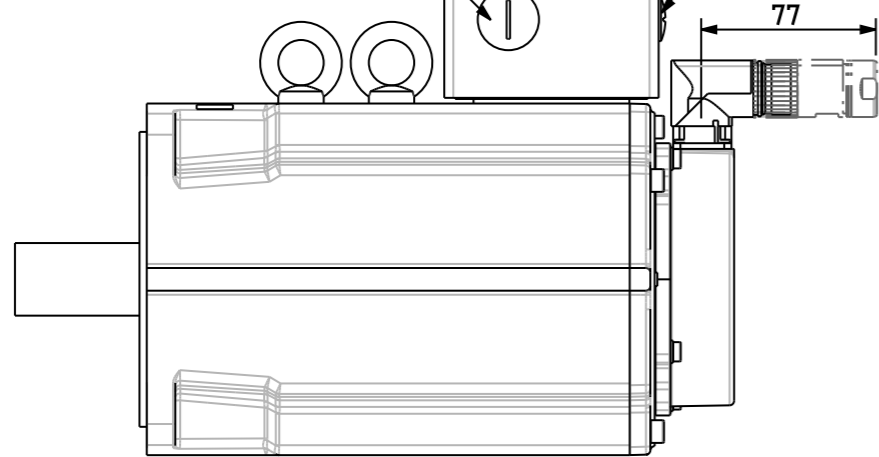
Engine driven clockwise shaft end side. Switching signal V is in phase with FEM UV.

Sheet : 2/7

This document is the property of PARVEX. Transmission as well as reproduction or copy is not permitted without written authorisation.	General tolerances	Drawn	03/07/09	YG	Visa						 <b>SSD Parvex</b> 8 Avenue du Lac, BP249 21007-DIJON cedex-FRANCE www.SSDdrives.com	NX MOTORS CONNECTIONS  CABLE VARIANT	Format	F	E	S	G	I		
	DIN ISO 2768 mK	Modifications	B	AM 23403 - 10/05/10 - OD											A3	x				
		A	AM 23392 - 03/05/01 - YG													344993			B	

Power  
For NX8 : M25x1.5  
For NX4: 20.45x1.411

Accessories  
For NX8 : M16x1.5  
For NX4: 18.65x1.411



N X - - E - - R 6

Torque range  
(depends on length)

Winding  
(depends on speed)

0 : Plain Shaft  
1 : key  
0 : IP 64  
1 : IP 65

- A : Resolver
- Q : Hiperface Multiturn SEL 37 - 16
- R : Hiperface Singleturn SKS 36 - 128
- S : Hiperface Multiturn SKM 36 - 128
- T : Hiperface Singleturn SRS 50 - 1024
- U : Hiperface Multiturn SRM 50 - 1024
- V : Endat Singleturn ECN 1113
- W : Endat Multiturn EQN 1125
- X : Low Cost Encoder - 2048

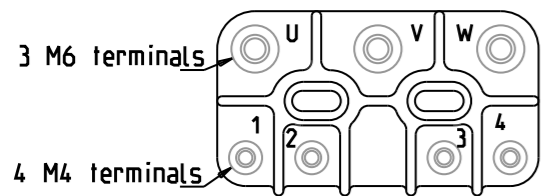
Temperature Sensor on Power Connector

- 0 : Base
- 1 : PTC
- 2 : Thermoswitch
- 6 : KTY
- 3 : Brake
- 4 : Brake + PTC
- 5 : Brake + Thermoswitch
- 7 : Brake + KTY

Temperature Sensor on Signal Connector

- A : PTC
- B : Thermoswitch
- C : KTY
- D : Brake + PTC
- E : Brake + Thermoswitch
- F : Brake + KTY

TERMINAL BOX



Ground in the terminal box (M6)

U : Phase U  
V : Phase V  
W : Phase W

1 : Brake +  
2 : Brake -  
3 : Temperature sensor▪  
4 : Temperature sensor\*\*

If the option is required

- PTC or Thermoswitch or KTY Anode
- \*\* PTC or Thermoswitch or KTY Cathode

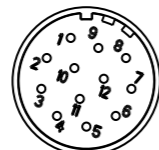
SIGNAL CONNECTOR



Feedback Letter : A  
(Resolver - 12 pins)

12 pins

- 1 : S3
- 2 : S1
- 3 : Temperature sensor ▪
- 6 : Temperature sensor \*\*
- 7 : S2
- 8 : S4
- 10 : R1
- 12 : R2



Feedback Letter : Q/R/S/T/U  
(Hiperface - 12 pins 15')

12 pins 15'

- 1 : Sin +
- 2 : Ref Sin
- 3 : Cos +
- 4 : Ref Cos
- 5 : Temperature sensor ▪
- 6 : Temperature sensor \*\*
- 9 : Data +
- 10 : Data -
- 11 : Us
- 12 : Ground



17 pins

Feedback Letter : V/W  
(Endat - 17 pins)

- 1 : Up Sensor
- 4 : OV Sensor
- 5 : Temperature sensor ▪
- 6 : Temperature sensor \*\*
- 7 : Up
- 8 : Clock
- 9 : Clock \
- 10: OV
- 12 : B+
- 13 : B-
- 14 : Data
- 15 : A+
- 16 : A-
- 17 : Data \

Feedback Letter : X  
(F10 - 17 pins)

- 1 : Vcc
- 3 : Ground
- 4 : U
- 5 : V\
- 6 : V
- 8 : W
- 9 : W\
- 10 : A
- 11 : A\
- 12 : B
- 13 : B\
- 14 : Z
- 15 : Z\

- PTC or Thermoswitch or KTY Anode
  - \*\* PTC or Thermoswitch or KTY Cathode
- If the option is required

ENCODER SETTINGS

Feedback Letter : A

Motor powered by direct current at the current nominal value (W+ and V-), the shift is 90° electrical.

Feedback Letter : Q

Motor powered by direct current at the current nominal value (W+ and V-), value in encoder memory is 26

Feedback Letter : R/S

Motor powered by direct current at the current nominal value (W+ et V-), value in encoder memory is 205

Feedback Letter : T/U

Motor powered by direct current at the current nominal value (W+ et V-), value in encoder memory is 1638

Feedback Letter : V/W

Motor powered by direct current at the current nominal value (W+ et V-), value in encoder memory is 410

Feedback Letter : X

Engine driven clockwise shaft end side. Switching signal V is in phase with FEM UV.

Sheet : 3/7

This document is the property of PARVEX. Transmission as well as reproduction or copy is not permitted without written authorisation.

General tolerances

DIN ISO 2768 mK

Drawn  
Modifications

	03/07/09	YG	Visa					
B	AM 23403 - 10/05/10 - 0D							
A	AM 23392 - 03/05/01 - YG							

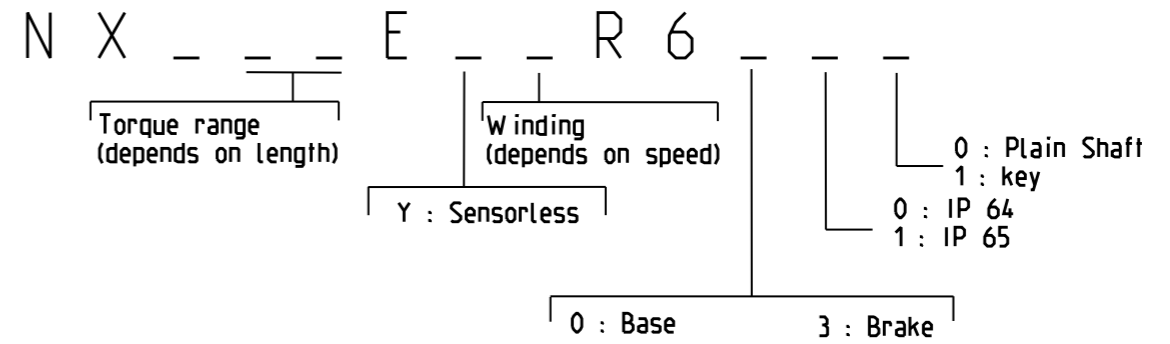
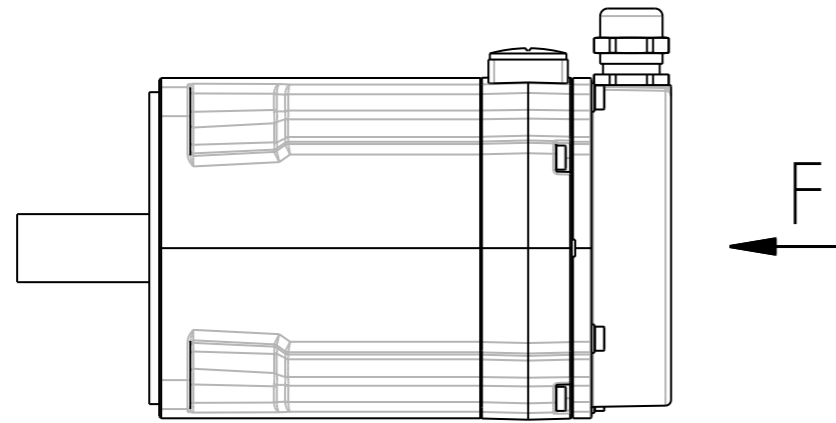
Scale  
/

**Parker**  
**SSD Parvex**  
8 Avenue du Lac. BP249  
21007-DIJON cedex-FRANCE  
www.SSDdrives.com

NX MOTORS CONNECTIONS  
TERMINAL BOX VARIANT

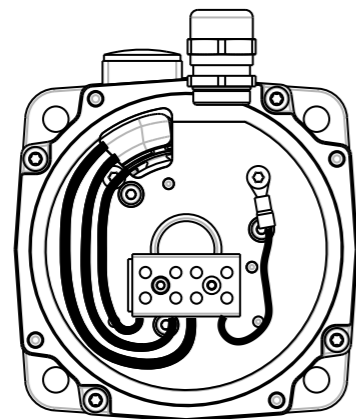
Format	F	E	S	G	I	
A3	x					
344993						B





**POWER TERMINAL BLOCK**

CONNECT SHIELDING TO GROUND WIRE

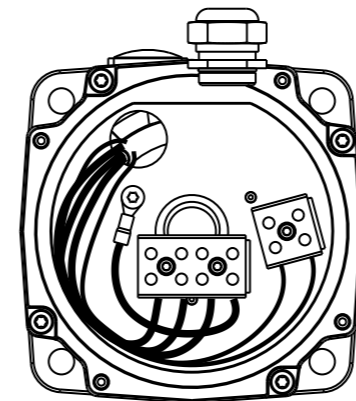


VIEW F WITHOUT COVER

**WITHOUT BRAKE**

**POWER**

Black : phase U  
White : phase V  
Red : phase W  
Yellow/Green : ground wire



VIEW F WITHOUT COVER

**WITH BRAKE**

**POWER**

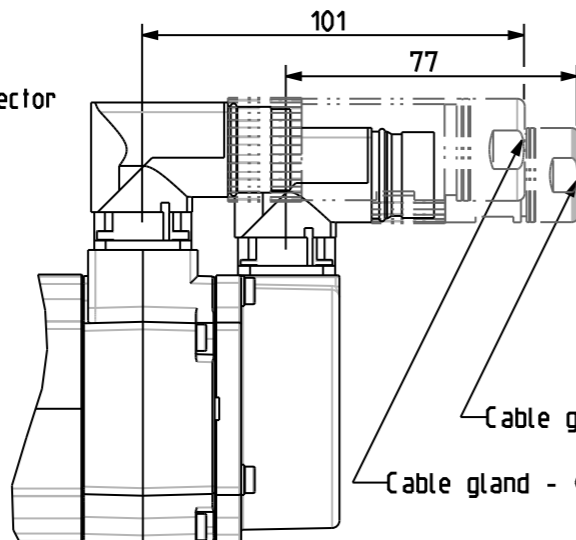
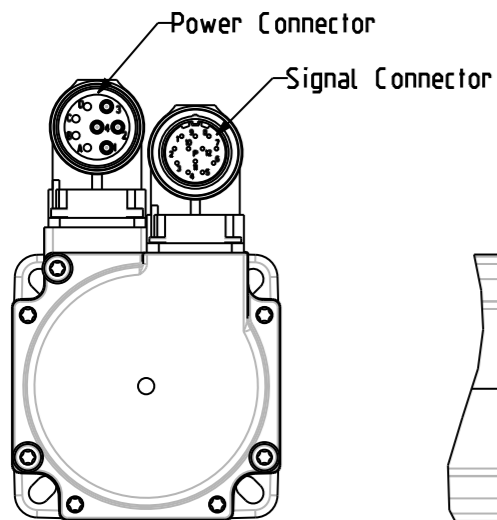
Black : phase U  
White : phase V  
Red : phase W  
Yellow/Green : ground wire

**Brake**

Black : Brake -  
Red : Brake +

CONNECT SHIELDING TO GROUND WIRE

This document is the property of PARVEX. Transmission as well as reproduction or copy is not permitted without written authorisation.	General tolerances DIN ISO 2768 mK	Drawn 03/07/09    YG    Visa					Scale /	 <b>SSD Parvex</b> 8 Avenue du Lac. BP249 21007-DIJON cedex-FRANCE www.SSDdrives.com	<b>NX MOTORS CONNECTIONS</b>					Format A3	F x	E 	S 	G 	I 	
	Modifications B AM 23403 - 10/05/10 - OD					<b>TERMINAL BLOCK VARIANT</b>					344993									
	A AM 23392 - 03/05/01 - YG															B				



N X - - E - - R 7

Torque range  
(depends on length)

Winding  
(depends on speed)

0 : Plain Shaft  
1 : key  
0 : IP 64  
1 : IP 65

A : Resolver  
Q : Hiperface Multiturn SEL 37 - 16  
R : Hiperface Singleturn SKS 36 - 128  
S : Hiperface Multiturn SKM 36 - 128

T : Hiperface Singleturn SRS 50 - 1024  
U : Hiperface Multiturn SRM 50 - 1024  
V : Endat Singleturn ECN 1113  
W : Endat Multiturn EQN 1125  
X : Low Cost Encoder - 2048  
Y : Sensorless

Temperature Sensor on Power Connector

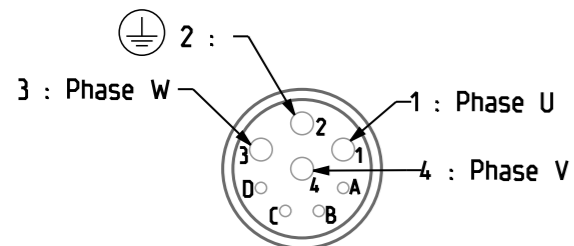
0 : Base  
1 : PTC  
2 : Thermoswitch  
6 : KTY  
3 : Brake  
4 : Brake + PTC  
5 : Brake + Thermoswitch  
7 : Brake + KTY

Temperature Sensor on Signal Connector

A : PTC  
B : Thermoswitch  
C : KTY  
D : Brake + PTC  
E : Brake + Thermoswitch  
F : Brake + KTY

EXCEPT NX1 MOTORS

**POWER CONNECTOR**



A : Brake +  
B : Brake -  
C : Temperature sensor ■ } If the option is required  
D : Temperature sensor ■■

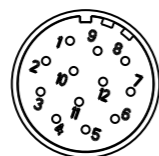
■ PTC or Thermoswitch or KTY Anode  
■■ PTC or Thermoswitch or KTY Cathode

**SIGNAL CONNECTOR**



Feedback Letter : A  
(Resolver - 12 pins)

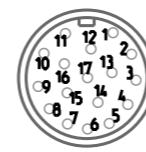
1 : S3  
2 : S1  
3 : Temperature sensor ■  
6 : Temperature sensor ■■  
7 : S2  
8 : S4  
10 : R1  
12 : R2



Feedback Letter : Q/R/S/T/U  
(Hiperface - 12 pins 15')

12 pins 15'

1 : Sin +  
2 : Ref Sin  
3 : Cos +  
4 : Ref Cos  
5 : Temperature sensor ■  
6 : Temperature sensor ■■  
9 : Data +  
10 : Data -  
11 : Us  
12 : Ground



17 pins

Feedback Letter : V/W  
(Endat - 17 pins)

1 : Up Sensor  
4 : OV Sensor  
5 : Temperature sensor ■  
6 : Temperature sensor ■■  
7 : Up  
8 : Clock  
9 : Clock \

10 : OV  
12 : B+  
13 : B-  
14 : Data  
15 : A+  
16 : A-  
17 : Data \

Feedback Letter : X  
(F10 - 17 pins)

1 : Vcc  
3 : Ground  
4 : U  
5 : V\  
6 : V  
8 : W  
9 : W\  
10 : A  
11 : A\  
12 : B  
13 : B\  
14 : Z  
15 : Z\  
16 : A-  
17 : Data \

■ PTC or Thermoswitch or KTY Anode  
■■ PTC or Thermoswitch or KTY Cathode } If the option is required

**ENCODER SETTINGS**

Feedback Letter : A

Motor powered by direct current at the current nominal value (W+ and V-), the shift is 90° electrical.

Feedback Letter : Q

Motor powered by direct current at the current nominal value (W+ and V-), value in encoder memory is 26

Feedback Letter : R/S

Motor powered by direct current at the current nominal value (W+ et V-), value in encoder memory is 205

Feedback Letter : T/U

Motor powered by direct current at the current nominal value (W+ et V-), value in encoder memory is 1638

Feedback Letter : V/W

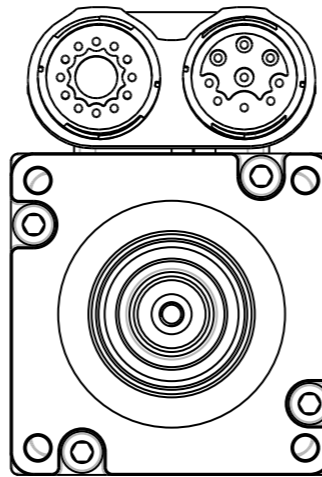
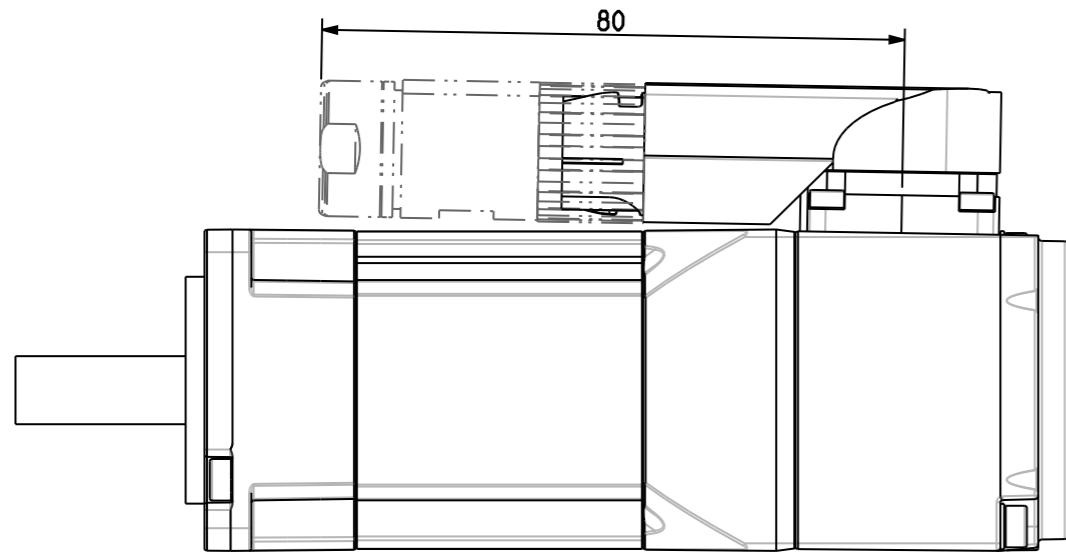
Motor powered by direct current at the current nominal value (W+ et V-), value in encoder memory is 410

Feedback Letter : X

Engine driven clockwise shaft end side. Switching signal V is in phase with FEM UV.

Sheet : 5/7

This document is the property of PARVEX. Transmission as well as reproduction or copy is not permitted without written authorisation.	General tolerances DIN ISO 2768 mK	Drawn	03/07/09	YG	Visa						Scale /	 <b>SSD Parvex</b> 8 Avenue du lac. BP249 21007-DIJON cedex-FRANCE www.SSDdrives.com	NX MOTORS CONNECTIONS CONNECTOR VARIANT	Format	F	E	S	G	I		344993	B
		Modifications	B	AM 23403 - 10/05/10 - OD											A3	x						



N X 1 - - E - - R 7

Torque range  
(depends on length)

Winding  
(depends on speed)

A : Resolver

0 : Plain Shaft  
1 : key  
0 : IP 64  
1 : IP 65

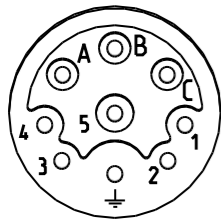
Temperature Sensor on Power Connector

0 : Base

3 : Brake

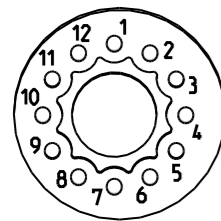
NX1 ONLY

POWER CONNECTOR



A : Phase U  
B : Phase V  
C : Phase W  
Ground  
1 : Brake + } If the option is required  
2 : Brake -

SIGNAL CONNECTOR



Feedback Letter : A  
(Resolver - 12 pins)  
1 : S3  
2 : S1  
7 : S2  
8 : S4  
10 : R1  
12 : R2

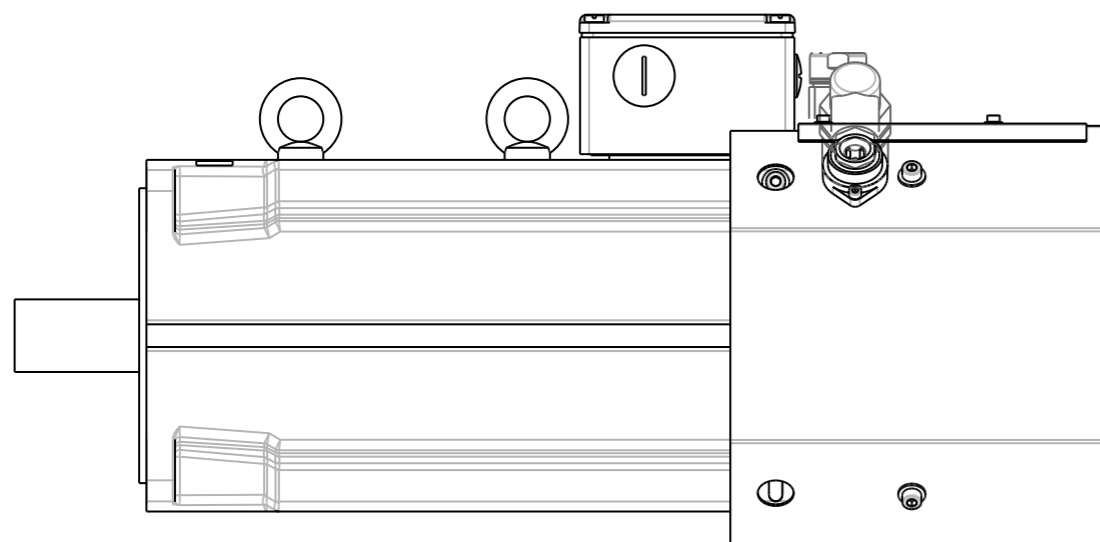
ENCODER SETTINGS

Feedback Letter : A

Motor powered by direct current  
at the current nominal value  
(W+ and V-), the shift is  
90° electrical.

Sheet : 6/7

This document is the property of PARVEX. Transmission as well as reproduction or copy is not permitted without written authorisation.	General tolerances  DIN ISO 2768 mK	Drawn 03/07/09 YG Visa  Modifications B AM 23403 - 10/05/10 - OD A AM 23392 - 03/05/01 - YG	Scale  /	 <b>SSD Parvex</b> 8 Avenue du lac. BP249 21007-DIJON cedex-FRANCE www.SSDdrives.com	<b>NX MOTORS CONNECTIONS</b>  <b>TERMINAL BOX VARIANT</b>	Format A3  344993	<table border="1"> <tr> <td>F</td> <td>E</td> <td>S</td> <td>G</td> <td>I</td> </tr> <tr> <td></td> <td>x</td> <td></td> <td></td> <td></td> </tr> </table>	F	E	S	G	I		x				B
	F	E	S	G	I													
		x																



N X \_ \_ \_ E \_ \_ R 9 \_ \_ \_  
 N X \_ \_ \_ E \_ \_ R 5 \*\* \_ \_ \_

Torque range (depends on length)      Winding (depends on speed)

A : Resolver  
 Q : Hiperface Multiturn SEL 37 - 16  
 R : Hiperface Singleturn SKS 36 - 128  
 S : Hiperface Multiturn SKM 36 - 128  
 T : Hiperface Singleturn SRS 50 - 1024  
 U : Hiperface Multiturn SRM 50 - 1024  
 V : Endat Singleturn ECN 1113  
 W : Endat Multiturn EQN 1125  
 X : Low Cost Encoder - 2048

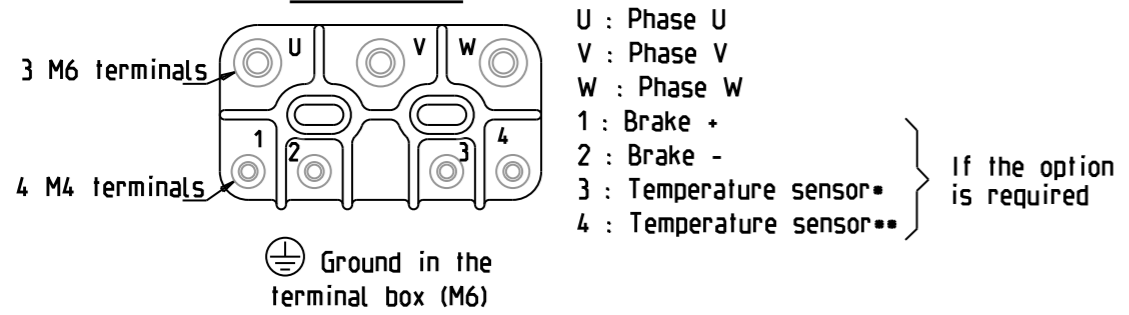
0 : Plain Shaft  
 1 : key  
 0 : IP 64  
 1 : IP 65

Temperature Sensor on Power Connector      Temperature Sensor on Signal Connector

0 : Base      3 : Brake      A : PTC      D : Brake + PTC  
 1 : PTC      4 : Brake + PTC      B : Thermoswitch      E : Brake + Thermoswitch  
 2 : Thermoswitch      5 : Brake + Thermoswitch      C : KTY      F : Brake + KTY  
 6 : KTY      7 : Brake + KTY

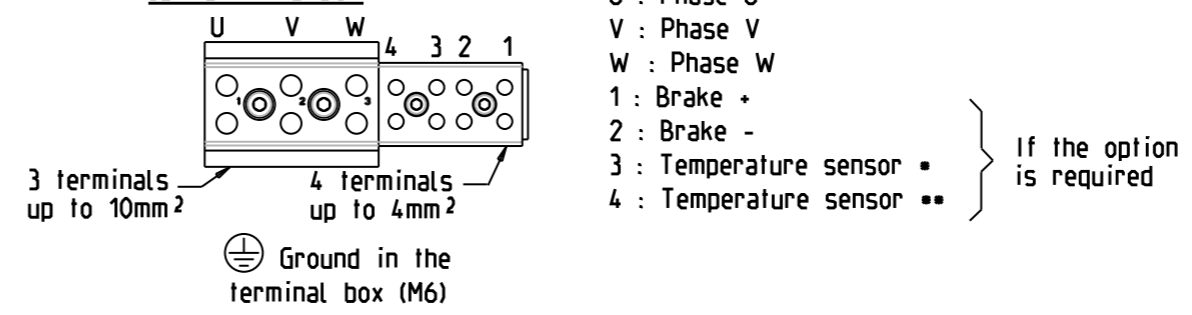
\*\*UL TERMINAL BOX AND VENTILATION

**TERMINAL BOX**

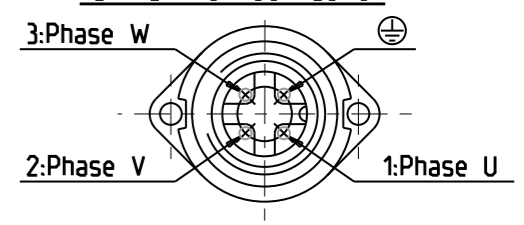


• PTC or Thermoswitch or KTY Anode  
 \*\* PTC or Thermoswitch or KTY Cathode

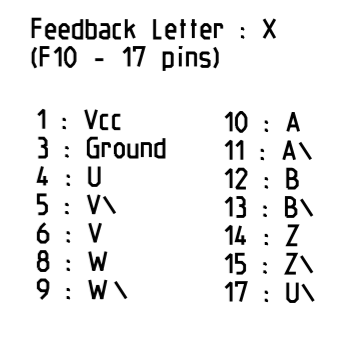
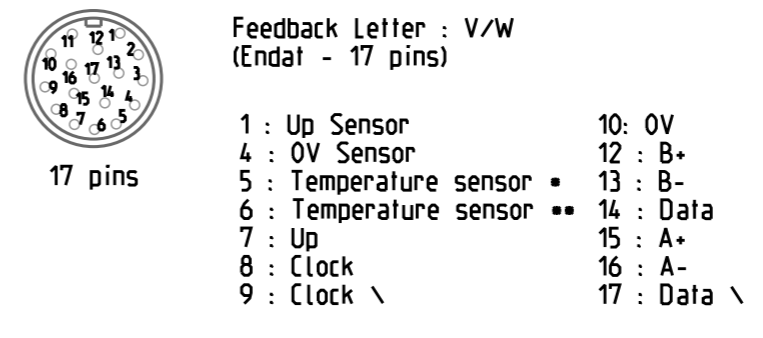
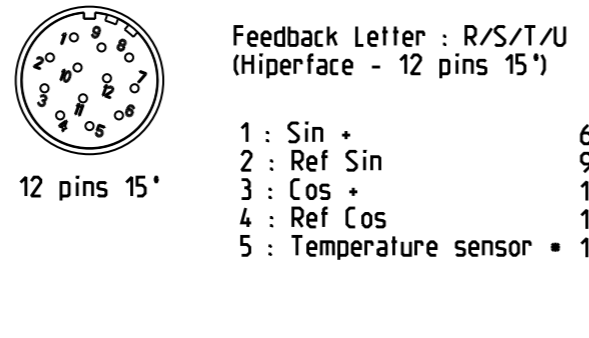
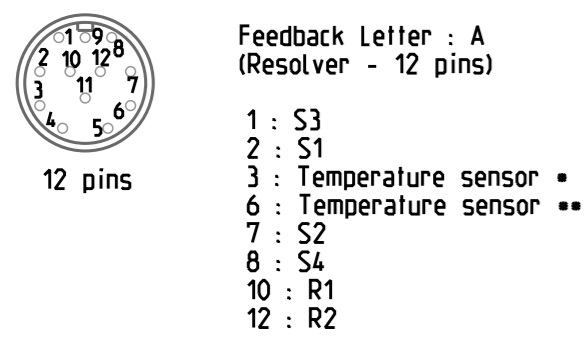
**UL TERMINAL BOX**



**VENTILATION CONNECTOR**



**SIGNAL CONNECTOR**



• PTC or Thermoswitch or KTY Anode  
 \*\* PTC or Thermoswitch or KTY Cathode } If the option is required

**ENCODER SETTINGS**

Feedback Letter : A	Feedback Letter : R/S	Feedback Letter : T/U	Feedback Letter : V/W	Feedback Letter : X
Motor powered by direct current at the current nominal value (W+ et V-), the shift is 90° electrical	Motor powered by direct current at the current nominal value (W+ et V-), value in encoder memory is 205	Motor powered by direct current at the current nominal value (W+ et V-), value in encoder memory is 1638	Motor powered by direct current at the current nominal value (W+ et V-), value in encoder memory is 410	Engine driven clockwise shaft end side. Switching signal V is n phase with FEM UV.

This document is the property of PARVEX. Transmission as well as reproduction or copy is not permitted without written authorisation.	General tolerances	Drawn	03/07/09	YG	Visa					Scale /	 <b>SSD Parvex</b> 8 Avenue du lac. BP249 21007-DIJON cedex-FRANCE www.SSDdrives.com	NX MOTORS CONNECTIONS	Format	F	E	S	G	I	
	DIN ISO 2768 mK	Modifications	B	AM 23403 - 10/05/10 - OD				A3	x										
		A	AM 23392 - 03/05/01 - YG									TERMINAL BOX VARIANT		344993					B